

TRUMBULL PUBLIC SCHOOLS

TRUMBULL, CONNECTICUT

Finance Committee of the

Trumbull Board of Education

Long Hill Administration Building – Ellie’s Room

Tuesday, April 26, 2022

Meeting ID

meet.google.com/wxq-rmoe-syb

4:30 PM

Phone Numbers

(US)+1 240-734-0317

PIN: 537 394 299#

MEETING AGENDA

1. Approval of minutes of March 24, 2022 meeting.
2. Review of Financials through March 31, 2022.
 - a. Fund 001 the BOE General Fund
 - b. Fund 009 the Town’s Fund for Non-Public school expenditures
 - c. Fund 100 Student Activities
 - d. Fund 200 State and Federal grants
 - e. Fund 205 Special Revenue Funds
 - f. Fund 210 Food Service
 - g. Fund 300 Scholarships formerly Expendable Trust
3. Other Business
4. Adjourn

TRUMBULL PUBLIC SCHOOLS

TRUMBULL, CONNECTICUT

Finance Committee Of the
Trumbull Board of Education

Meeting Minutes

Date of Meeting: Thursday, March 24, 2022

Attendees: Jackie Norcel, Julia McNamee, Christopher Bandecchi, Peg Brindisi, Paul Hendrickson, and Mary Issac.

Location: Long Hill Assembly Hall.

The meeting was called to order at 4:32 pm.

The minutes of the February 24, 2022 meeting were approved.

Mr. Hendrickson reviewed the financial reports as of February 28, 2022 including:

- a. Fund 001 the BOE General Fund
- b. Fund 009 the Town's Fund for Non-Public school expenditures
- c. Fund 100 Student Activities
- d. Fund 200 State and Federal grants
- e. Fund 205 Special Revenue Funds
- f. Fund 210 Food Service
- g. Fund 300 Scholarships formerly Expendable Trust

Mr. Hendrickson stated that the cumulative percentage of budget spent year-to-date was 57.8%; in the past three years the percentage has ranged from 55.2% => 62.5%. He stated that salaries YTD were 54.4% of the salary budget while in the past three years salaries YTD have ranged from 52.3% => 55.2%. Salaries are approximately 66% of the budget.

The Town Accounts (009) had year-to-date (YTD) expenses of \$575,830 or 45.8% of the budget.

The Student Activities accounts (100) decreased \$8,053 from \$335,686 (1/31) => \$327,633 (2/28).

In reviewing grants (200), Mr. Hendrickson mentioned that the three grants that were in deficit last month (Title I; Title II, Part A; and Title III) were now fully funded; however, the Head Start – Food grant had a small deficit.

The Special Revenue Funds (205) had several accounts in a deficit position, two of which should be self-liquidating: THS AP Testing and Voluntary Insurance. A few accounts are in deficit due to encumbrances and deferred revenue.

The Lunch Account (210) had a profit in February = \$168,937 (January's profit = \$101,502). Under the Seamless Summer Option (SSO) the District had submitted its lunch claims for January (\$302,029.26) and

February (\$341,276.35), totaling \$643,305.61. The cash balance (2/28) = \$839,523 while the “Due to Town” account = \$644,060. This reflected the \$1 million transfer from the Cash Account to Due to Town Account which was approved in January.

The Scholarship Fund (300) has had a net increase of \$110 since July 1st (\$128,362) => February 28th \$128,472.

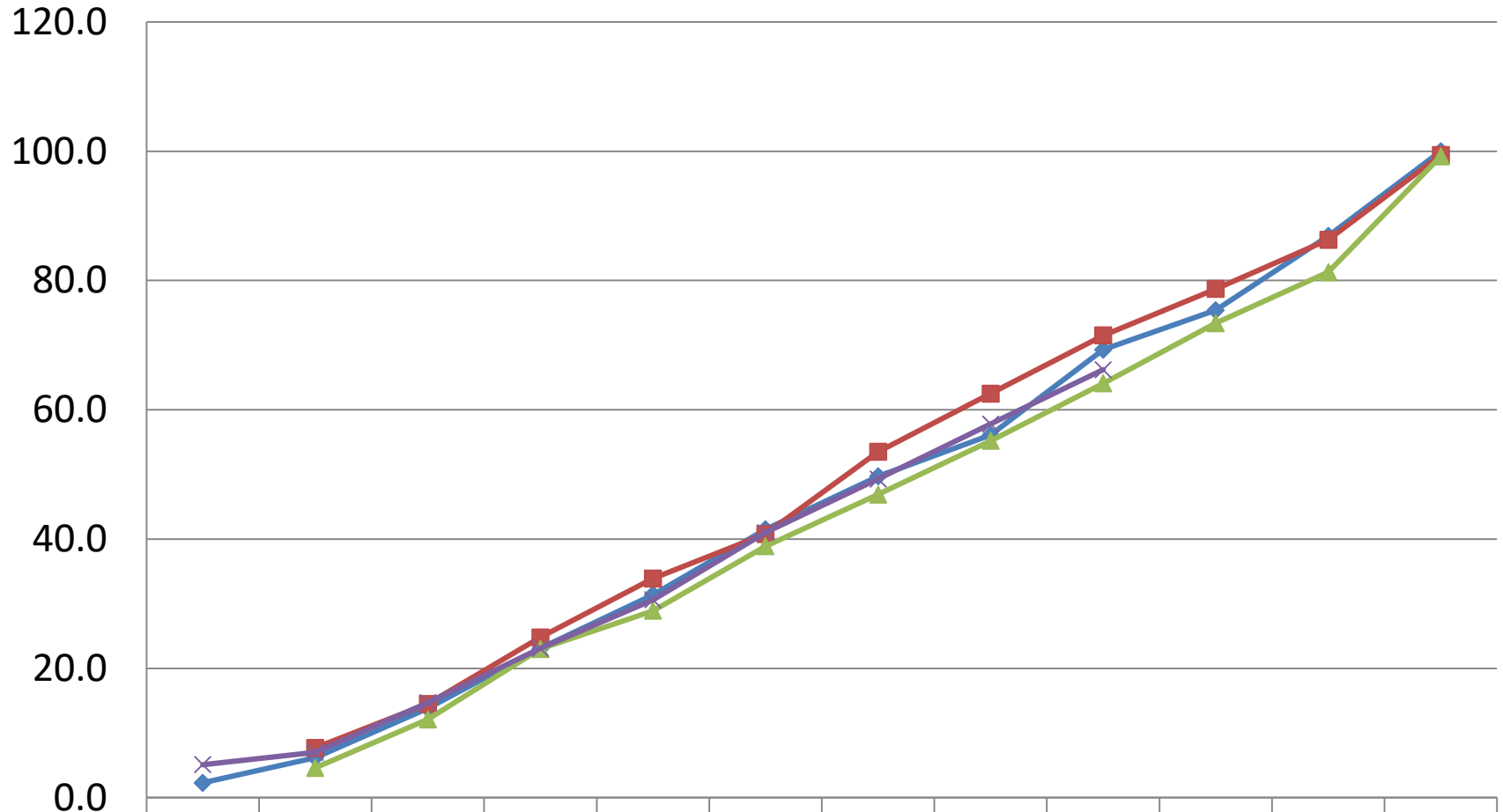
Ms. Julia McNamee made a motion to accept the Financial Report and forward it to the Board of Education. The motion was seconded by Ms. Jackie Norcel. The Committee voted unanimously to forward the Report to the Board of Education.

The meeting was adjourned at 5:15 pm.

Respectfully submitted,

Paul Hendrickson

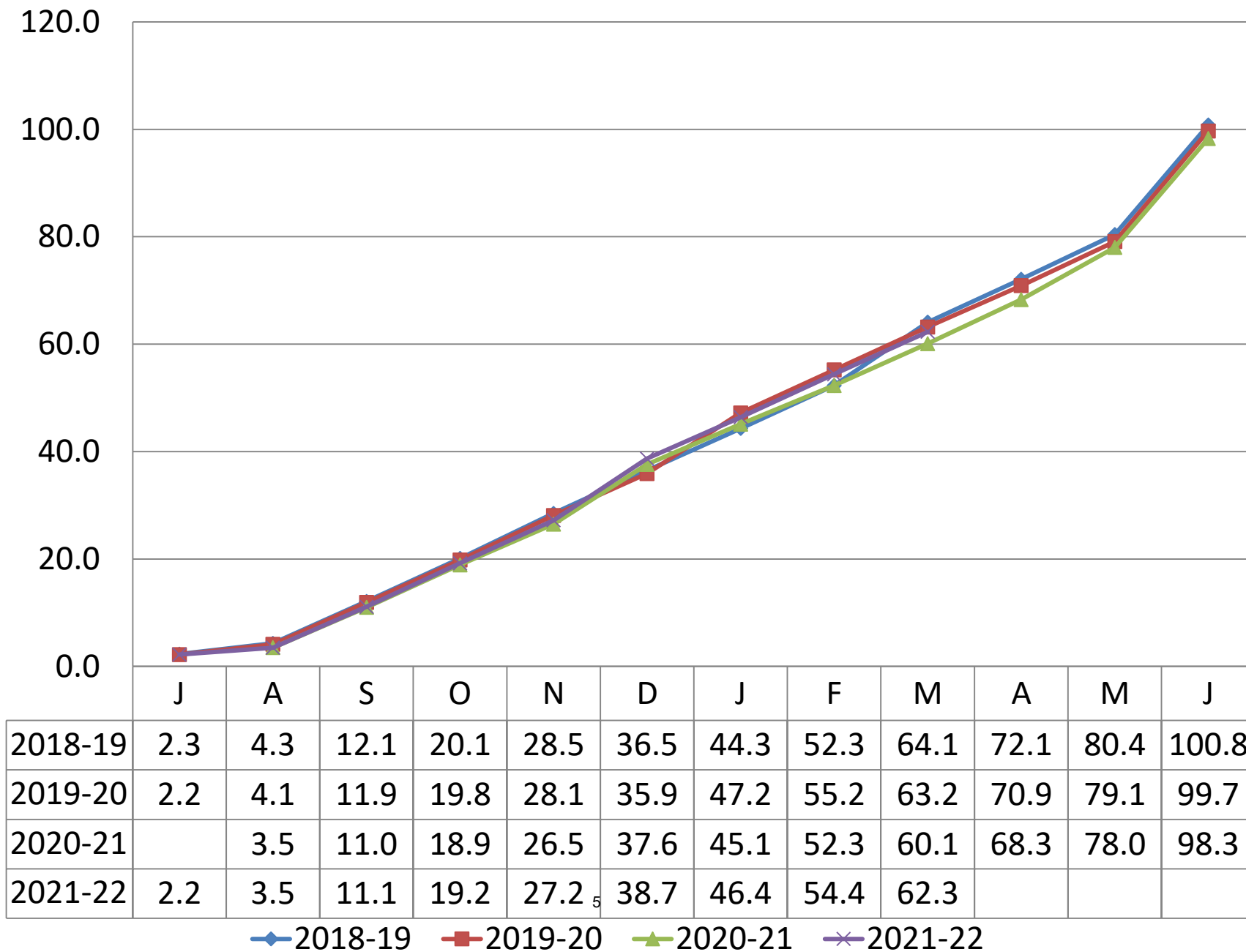
Cumulative Total Board of Education Budget % By Month



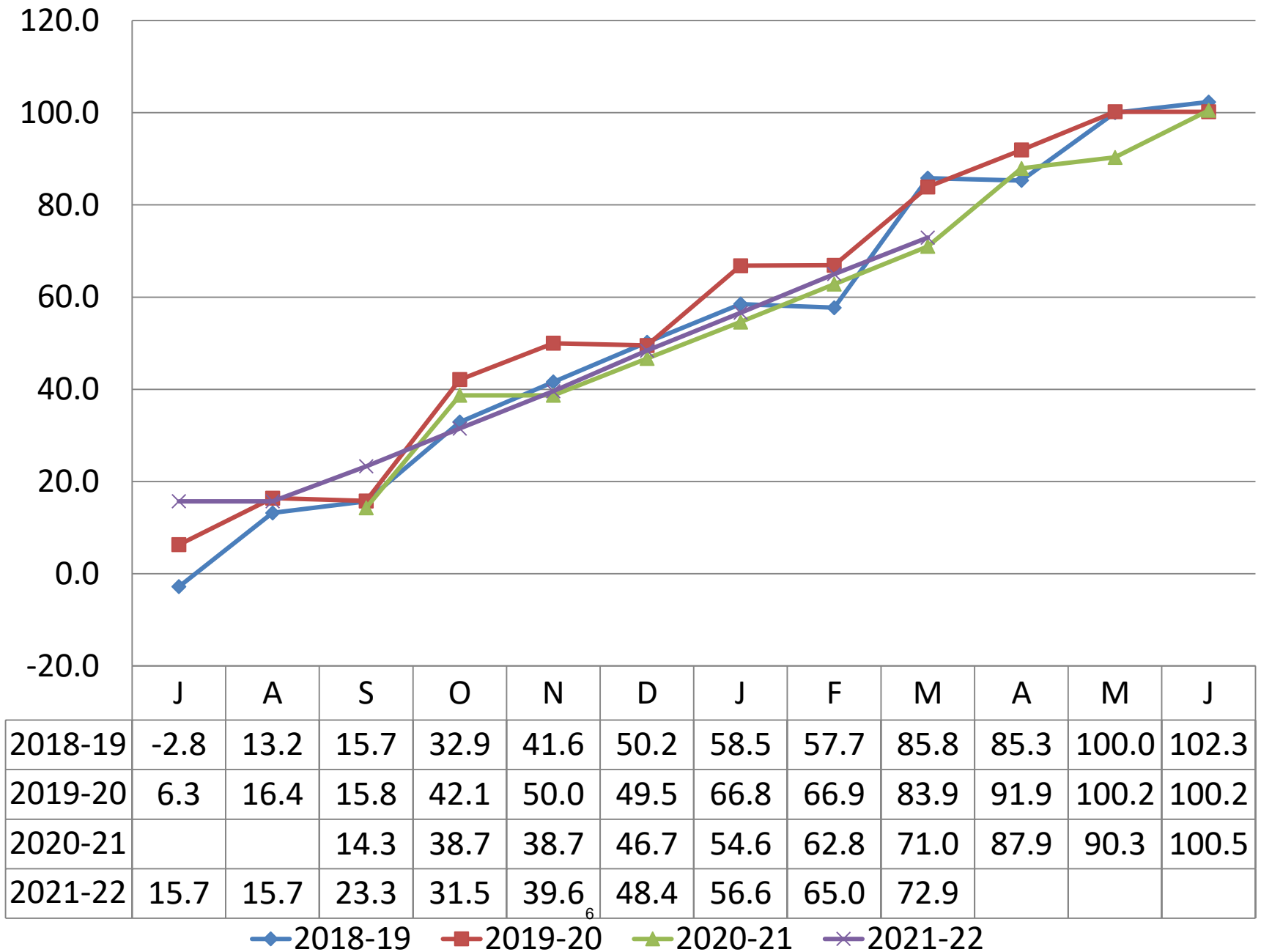
	J	A	S	O	N	D	J	F	M	A	M	J
2018-19	2.3	6.2	13.8	23.1	31.4	41.5	49.7	56.1	69.3	75.4	86.9	100.0
2019-20		7.7	14.5	24.8	33.9	40.8	53.5	62.5	71.5	78.7	86.3	99.4
2020-21		4.6	12.1	23.0	28.9	38.9	46.9	55.2	64.1	73.4	81.3	99.2
2021-22	5.1	7.0	14.7	23.1	30.6	41.0	49.3	57.8	66.2			

◆ 2018-19
■ 2019-20
▲ 2020-21
✕ 2021-22

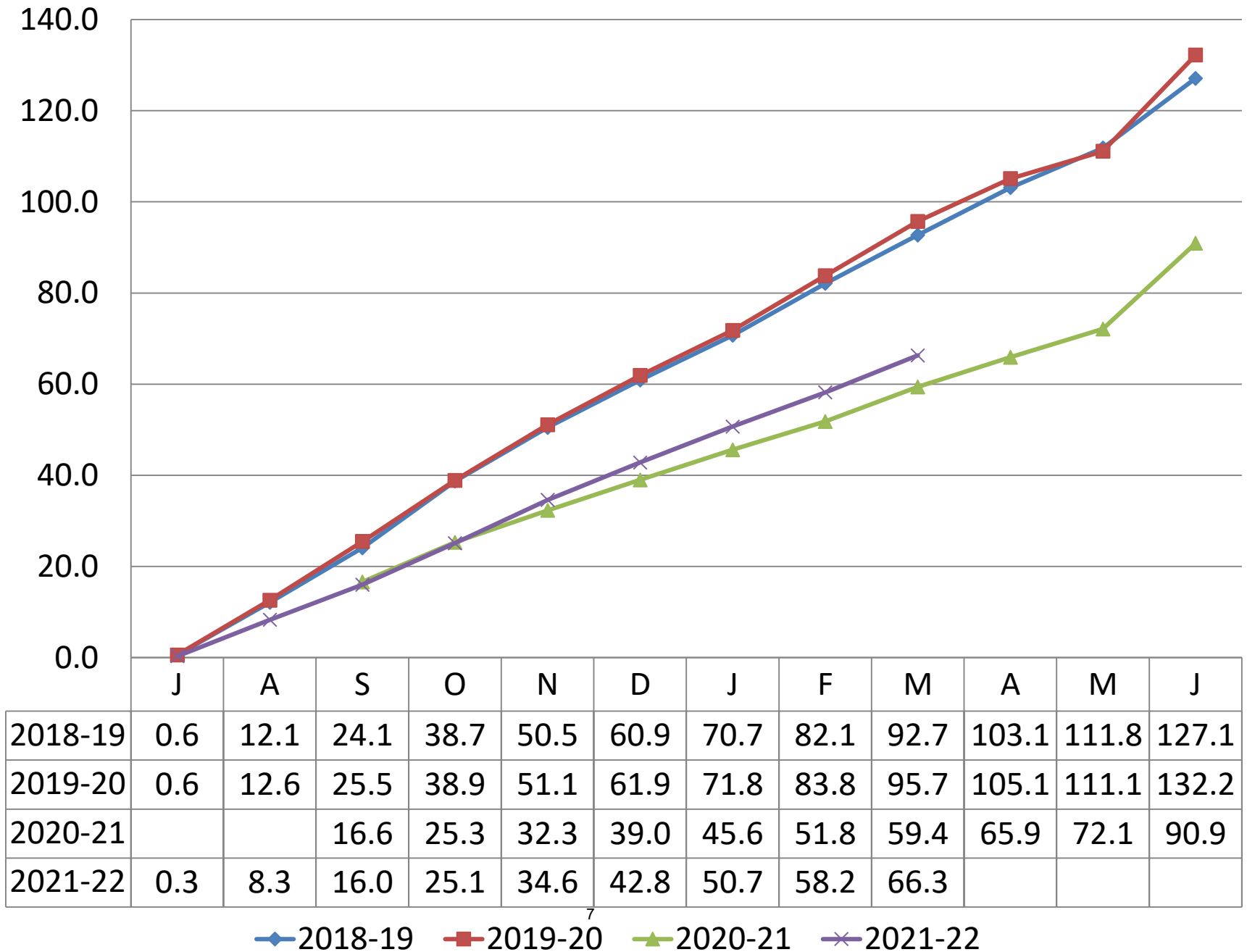
Cumulative Board of Education Salaries Budget % By Month



Cumulative Board of Education Benefits Budget % By Month



Cumulative Board of Education Utilities Budget % By Month



Report For Period Ending March 31, 2022

Fund	ACCOUNT DESCRIPTION	ORIGINAL APPROP	TRANFRS/ADJSMTS	REVISED BUDGET	YTD EXPENDED	ENCUMBRANCES	AVAILABLE BUDGET	% USED
001	001 BOE GENERAL FUND	112,296,658	-	112,296,658	74,372,018	36,508,183	1,416,457	98.70
009	009 TOWN ACCOUNTS FUND	-	1,257,428	1,257,428	635,542	496,786	125,100	90.10
200	200 GRANTS FUND	-	6,555,605	6,555,605	2,461,855	1,136,865	2,956,885	54.90
205	205 SPECIAL REVENUE FUND	-	315,185	315,185	1,193,093	528,844	(1,406,752)	546.30
210	210 SCHOOL LUNCH FUND	-	2,591,926	2,591,926	2,194,848	953,788	(556,709)	121.50
300	300 SCHOLARSHIP FUND	-	-	-	4,640	-	(4,640)	100.00
	Grand Total	112,296,658	10,720,144	123,016,802	80,861,995	39,624,466	2,530,340	97.90

Trumbull Board of Education Expense vs Budget Summary
Report for the Period Ended 3/31/2022

<u>Object Description</u>	<u>Code</u>	<u>Revised</u>	<u>Expended</u>	<u>Committed/ Estimates</u>	<u>Available/ (Over)</u>	<u>% Spent or Committed</u>
<u>Salaries</u>	<u>100</u>					
Admin/Supervisors		\$4,672,445	\$3,593,630	\$1,090,400	-\$11,585	100%
Teachers		\$54,603,505	\$31,976,596	\$21,694,372	\$932,537	98%
Custodians/Maintenance		\$3,712,660	\$2,681,722	\$989,153	\$41,785	99%
Tech Support		\$534,412	\$379,325	\$112,208	\$42,879	92%
Admin Support		\$2,710,804	\$1,976,031	\$756,833	-\$22,060	101%
Paras & Aides		\$4,369,946	\$3,201,504	\$1,346,702	-\$178,259	104%
Substitutes		\$872,435	\$765,722	\$300,011	-\$193,298	122%
Coaches & Advisors		\$695,045	\$350,145	\$335,816	\$9,084	99%
Salaries Other		\$1,584,765	\$996,439	\$558,934	\$29,392	98%
Misc Salary Items		\$308,668	\$250,858	\$0	\$57,810	81%
Salaries	Total	\$74,064,685	\$46,171,971	\$27,184,429	\$708,285	99%
<u>Employee Benefits</u>	<u>200</u>					
Health Insurance		\$16,201,647	\$11,968,682	\$3,766,213	\$466,752	97%
FICA		\$1,882,323	\$1,243,345	\$638,978	\$0	100%
Other Insurance		\$336,501	\$260,948	\$67,845	\$7,708	98%
Unemployment		\$130,000	\$23,960	\$16,040	\$90,000	31%
Benefits Other		\$193,595	\$167,995	\$60,230	-\$34,630	118%
Employee Benefits	Total	\$18,744,066	\$13,664,930	\$4,549,306	\$529,830	97%
<u>Purchased Professional Services</u>	<u>300</u>					
Legal		\$260,000	\$127,775	\$123,200	\$9,025	97%
Service Contracts		\$415,087	\$385,179	\$20,348	\$9,560	98%
Consultants		\$225,000	\$134,578	\$112,170	-\$21,747	110%
Other Prof Services		\$459,900	\$378,967	\$74,660	\$6,273	99%
Purchased Professional Services	Total	\$1,359,987	\$1,026,499	\$330,377	\$3,111	100%
<u>Purchased Property Services</u>	<u>400</u>					
Utilities		\$1,289,000	\$854,069	\$418,620	\$16,311	99%
Repairs & Svc Fees		\$348,500	\$305,340	\$164,975	-\$121,815	135%
Copiers		\$265,000	\$169,364	\$84,413	\$11,223	96%
Other Purch'd Property Svcs		\$111,900	\$81,983	\$31,546	-\$1,629	101%
Purchased Property Services	Total	\$2,014,400	\$1,410,755	\$699,554	-\$95,910	105%
<u>Purchased Other Services</u>	<u>500</u>					
Transportation		\$6,152,707	\$4,023,552	\$2,111,007	\$18,148	100%
Communications		\$275,250	\$215,580	\$74,426	-\$14,756	105%
Postage		\$40,000	\$22,811	\$19,745	-\$2,555	106%
Advertising		\$1,200	\$1,992	\$0	-\$792	166%
Interns		\$296,400	\$129,750	\$129,750	\$36,900	88%
Tuition		\$4,750,000	\$4,304,526	\$815,196	-\$369,722	108%
Printing		\$14,950	\$7,244	\$0	\$7,706	48%
Other Purch'd Svcs		\$323,352	\$242,310	\$12,775	\$68,267	79%
Purchased Other Services	Total	\$11,853,859	\$8,947,764	\$3,162,899	-\$256,805	102%
<u>Supplies</u>	<u>600</u>					
Supplies-Teaching		\$601,227	\$358,111	\$49,656	\$193,460	68%
Supplies-Office		\$101,550	\$73,158	\$17,571	\$10,821	89%
Supplies-Custodial		\$175,000	\$158,472	\$50,391	-\$33,864	119%
Supplies-Maintenance		\$284,000	\$163,957	\$43,012	\$77,031	73%
Text & Workbooks		\$407,266	\$179,028	\$14,591	\$213,646	48%
Subscriptions		\$315,545	\$283,391	\$895	\$31,260	90%
Testing Materials		\$134,600	\$89,232	\$3,641	\$41,728	69%
Books & A/V		\$44,040	\$24,978	\$9,411	\$9,651	78%
Software		\$119,000	\$134,698	\$523	-\$16,221	114%
Energy		\$435,000	\$409,827	\$25,173	\$0	100%
Other Supplies		\$31,650	\$14,681	\$12,859	\$4,110	87%

Trumbull Board of Education Expense vs Budget Summary
Report for the Period Ended 3/31/2022

<u>Object Description</u>	<u>Code</u>	<u>Revised</u>	<u>Expended</u>	<u>Committed/ Estimates</u>	<u>Available/ (Over)</u>	<u>% Spent or Committed</u>
Supplies	Total	\$2,648,878	\$1,889,533	\$227,722	\$531,623	80%
<u>Property</u>	<u>700</u>					
Office Equipment		\$850	\$0	\$0	\$850	0%
Office Furniture		\$1,200	\$1,620	\$0	-\$420	135%
Classroom Equipment		\$409,131	\$300,219	\$15,450	\$93,462	77%
Classroom Furniture		\$11,500	\$8,581	(\$0)	\$2,919	75%
Bldg Equipment		\$148,492	\$184,913	\$93,882	-\$130,304	188%
Bldg Improvements		\$158,489	\$94,216	\$24,490	\$39,784	75%
Other Equipment		\$3,500	\$676	\$0	\$2,824	19%
Property	Total	\$733,162	\$590,225	\$133,822	\$9,115	99%
<u>Debt Service & Miscellaneous</u>	<u>800</u>					
Dues, Fees and Memberships		\$876,621	\$670,342	\$220,073	-\$13,794	102%
Other Objects		\$1,000	\$0	\$0	\$1,000	0%
Miscellaneous	Total	\$877,621	\$670,342	\$220,073	-\$12,794	101%
<u>Other Objects</u>	<u>917</u>					
Other-Ant Surpl/Excess Cst		\$0	\$0	\$0	\$0	#DIV/0!
Other Objects	Total	\$0	\$0	\$0	\$0	#DIV/0!
Munis Report Total		\$112,296,658	\$74,372,018	\$36,508,183	\$1,416,457	99%

**Trumbull Board of Education Expense vs Budget Detail
Report for the Period Ended 3/31/2022**

Account #	Account Description	Budget			Expended	Committed/ Estimates	Available/ (Over)
		Original	Transfers	Revised			
<u>Salaries</u>							
<u>Admin/Supervisors</u>							
01011000-51113	TECEC-Admin-Admin Salaries	\$121,360	\$0	\$121,360	\$106,690	\$32,007	(\$17,337)
01011200-51114	PPS-Admin-Director/Coordinator	\$309,071	\$0	\$309,071	\$237,747	\$71,324	\$0
01402320-51114	Asst Super-Admin-Asst Superintendent	\$130,000	\$0	\$130,000	\$78,000	\$30,000	\$22,000
01412210-51113	D/W-Elem Asst Principal	\$0	\$0	\$0	\$0	\$0	\$0
01412210-51114	Curr Dir-Admin-Director	\$193,000	\$0	\$193,000	\$151,692	\$45,508	(\$4,200)
01422520-51125	Tech-Admin-Manager	\$132,575	\$0	\$132,575	\$104,021	\$31,206	(\$2,652)
01512400-51113	BHES-Admin-Principal	\$178,449	\$0	\$178,449	\$137,268	\$41,181	\$0
01522400-51113	FTES-Admin-Principal/Asst Principal	\$178,449	\$0	\$178,449	\$137,268	\$41,181	\$0
01532400-51113	DFES-Admin-Princiapl	\$178,449	\$0	\$178,449	\$137,268	\$41,181	\$0
01542400-51113	MBES-Admin-Principal	\$178,449	\$0	\$178,449	\$137,268	\$41,181	\$0
01552400-51113	JRES-Admin-Principal	\$162,865	\$0	\$162,865	\$125,281	\$37,584	(\$0)
01582400-51113	TSES-Admin-Principal	\$178,449	\$0	\$178,449	\$137,268	\$41,181	\$0
01612400-51113	HMS-Admin-Principal/Asst Principal	\$335,544	\$0	\$335,544	\$258,111	\$77,433	(\$0)
01622400-51113	MMS-Admin-Principal/Asst Principal	\$343,331	\$0	\$343,331	\$264,101	\$79,230	(\$0)
01711006-51114	THS-Ag Science-Director	\$77,124	\$0	\$77,124	\$60,859	\$18,258	(\$1,993)
01711019-51114	Sports-Sports General-Director	\$164,882	\$0	\$164,882	\$126,832	\$38,050	(\$0)
01712400-51113	THS-Admin-Principals	\$842,283	\$0	\$842,283	\$647,910	\$194,373	\$0
01741200-51113	Continuing Ed-Admin-Administrator	\$0	\$0	\$0	(\$37)	\$0	\$37
01822230-51125	Facilities-Admin-Director/Managers	\$242,997	\$0	\$242,997	\$169,659	\$56,598	\$16,740
01822230-51141	Facilities-Admin-Manager OT	\$0	\$0	\$0	\$0	\$0	\$0
01882700-51125	Trans-Admin-Manager	\$67,969	\$0	\$67,969	\$56,251	\$16,875	(\$5,158)
01902320-51115	Super-Admin-Superintendent	\$248,750	\$0	\$248,750	\$202,061	\$60,618	(\$13,929)
01912520-51113	Bus Off-Admin-Business Administrator	\$169,500	\$0	\$169,500	\$132,992	\$39,898	(\$3,390)
01912520-51129	Bus Off-Admin-Acctg Manager	\$85,182	\$0	\$85,182	\$66,835	\$20,050	(\$1,703)
01922530-51125	Asst Super-Dir Digital Learning	\$153,767	\$0	\$153,767	\$118,282	\$35,485	(\$0)
	Admin/Supervisors Total	\$4,672,445	\$0	\$4,672,445	\$3,593,630	\$1,090,400	(\$11,585)
<u>Teachers</u>							
01011000-51110	TECEC-Classroom-Teachers	\$662,244	\$0	\$662,244	\$389,566	\$283,979	(\$11,301)
01011200-51118	PPS-L/W-Curriculum Writing	\$20,000	\$0	\$20,000	\$0	\$0	\$20,000
01011200-51119	PPS-L/W-Teacher Xtra Time	\$24,000	\$0	\$24,000	\$30,475	\$0	(\$6,475)
01021201-51119	PPS-After School-Teacher Salaries	\$0	\$0	\$0	\$0	\$0	\$0
01062140-51111	PPS-L/W-Psychologists	\$1,989,018	\$0	\$1,989,018	\$1,186,881	\$824,147	(\$22,010)
01072110-51111	PPS-L/W-Social Workers	\$1,285,959	\$0	\$1,285,959	\$676,789	\$473,570	\$135,601
01082150-51111	PPS-L/W-Speech & Language	\$1,358,551	\$0	\$1,358,551	\$799,393	\$526,625	\$32,533
01121200-51111	TECEC-Classroom-Specialists	\$110,000	\$0	\$110,000	\$103,936	\$48,486	(\$42,422)
01161200-51110	PPS-SPED-Elementary Teachers	\$1,822,829	\$0	\$1,822,829	\$1,119,045	\$702,857	\$927
01231200-51110	PPS-SPED-Middle School Teachers	\$1,262,530	\$0	\$1,262,530	\$784,355	\$569,781	(\$91,606)
01331200-51110	PPS-SPED-THS Teachers	\$1,973,517	\$0	\$1,973,517	\$1,164,867	\$834,527	(\$25,878)
01371200-51118	PPS-ESY-Teacher salaries	\$133,000	\$0	\$133,000	\$146,974	\$0	(\$13,974)
01402210-51110	Curr Dir-D/W-ELL Teachers	\$586,408	\$0	\$586,408	\$329,239	\$216,704	\$40,465
01402320-51116	Asst Super-Admin-Teacher Stipends	\$0	\$0	\$0	\$0	\$0	\$0
01402320-51118	Asst Super-L/W-Prof Devt Prep	\$0	\$0	\$0	\$0	\$0	\$0
01402320-51200	Asst Super-Admin-Teacher Mentors	\$5,000	\$0	\$5,000	\$0	\$0	\$5,000
01411250-51110	Curr Dir-D/W-TAG Teachers	\$114,478	\$0	\$114,478	\$66,045	\$48,433	\$0
01412210-51111	Curr Dir-D/W-Program Leaders	\$378,442	\$0	\$378,442	\$240,915	\$137,527	\$0
01412210-51117	Curr Dir-D/W-Teacher Training	\$50,000	\$0	\$50,000	\$13,578	\$21,000	\$15,422
01412210-51118	Curr Dir-D/W-Prof Devt Prep	\$30,000	\$0	\$30,000	\$24,882	\$0	\$5,118
01412210-51119	Curr Dir-Admin-Curriculum Writing	\$80,104	\$0	\$80,104	\$39,712	\$0	\$40,392
01511001-51110	BHES-Classroom-Teachers	\$2,167,873	\$0	\$2,167,873	\$1,280,364	\$921,250	(\$33,741)
01511002-51110	BHES-Classroom-Specialists	\$394,182	\$0	\$394,182	\$325,693	\$235,628	(\$167,139)
01512220-51110	BHES Library-Teachers-Salaries	\$93,385	\$0	\$93,385	\$53,876	\$39,509	\$0
01521001-51110	FTES-Classroom-Teachers	\$2,585,110	\$0	\$2,585,110	\$1,400,548	\$929,881	\$254,681
01521002-51110	FTES-Classroom-Specialists	\$889,845	\$0	\$889,845	\$531,479	\$349,376	\$8,990
01522220-51110	FTES Library-Teachers-Salaries	\$105,496	\$0	\$105,496	\$60,863	\$44,633	(\$0)
01531001-51110	DFES-Classroom-Teachers	\$2,402,500	\$0	\$2,402,500	\$1,322,723	\$969,997	\$109,781
01531002-51110	DFES-Classroom-Specialists	\$551,263	\$0	\$551,263	\$379,146	\$219,016	(\$46,899)
01532220-51110	DFES Library-Teachers-Salaries	\$80,442	\$0	\$80,442	\$46,409	\$34,033	\$0
01541001-51110	MBES-Classroom-Teachers	\$2,402,936	\$0	\$2,402,936	\$1,364,868	\$956,871	\$81,196
01541002-51110	MBES-Classroom-Specialists	\$812,223	\$0	\$812,223	\$484,995	\$308,369	\$18,859
01542220-51110	MBES Library-Teachers-Salaries	\$114,478	\$0	\$114,478	\$66,045	\$48,433	\$0
01551001-51110	JRES-Classroom-Teachers	\$1,957,727	\$0	\$1,957,727	\$1,119,101	\$802,957	\$35,669
01551002-51110	JRES-Classroom-Specialists	\$477,992	\$0	\$477,992	\$356,471	\$211,890	(\$90,369)
01552220-51110	JRES Library-Teachers-Salaries	\$114,478	\$0	\$114,478	\$66,045	\$48,433	\$0
01581001-51110	TES-Classroom-Teachers	\$1,798,582	\$0	\$1,798,582	\$1,035,784	\$719,770	\$43,028
01581002-51110	TES-Classroom-Specialists	\$420,582	\$0	\$420,582	\$336,593	\$217,179	(\$133,190)
01582220-51110	TES Library-Teachers-Salaries	\$88,060	\$0	\$88,060	\$50,804	\$37,256	\$0

**Trumbull Board of Education Expense vs Budget Detail
Report for the Period Ended 3/31/2022**

Account #	Account Description	Budget			Expended	Committed/ Estimates	Available/ (Over)
		Original	Transfers	Revised			
01611001-51110	HMS-Classroom-Teacher Salaries	\$3,969,616	\$0	\$3,969,616	\$2,163,507	\$1,536,906	\$269,203
01611016-51110	HMS-Music-Teacher Salaries	\$337,268	\$0	\$337,268	\$203,516	\$124,127	\$9,625
01611019-51110	HMS-PE/Health-Teacher Salaries	\$390,096	\$0	\$390,096	\$236,807	\$153,288	\$1
01612120-51110	HMS-Guidance-Teacher Salaries	\$286,244	\$0	\$286,244	\$170,696	\$115,548	\$0
01612220-51110	HMS-Library-Teacher Salaries	\$99,033	\$0	\$99,033	\$57,134	\$41,899	\$0
01612400-51110	HMS-Admin-Teacher Xtra days	\$0	\$0	\$0	\$0	\$0	\$0
01621001-51110	MMS-Classroom-Teacher Salaries	\$4,239,485	\$0	\$4,239,485	\$2,486,457	\$1,674,551	\$78,477
01621016-51110	MMS-Music-Teacher Salaries	\$318,661	\$0	\$318,661	\$185,552	\$110,953	\$22,156
01621019-51110	MMS-PE/Health-Teacher Salaries	\$399,307	\$0	\$399,307	\$264,133	\$141,322	(\$6,148)
01622120-51110	MMS-Guidance-Teacher Salaries	\$317,719	\$0	\$317,719	\$188,855	\$128,864	\$0
01622220-51110	MMS-Library-Teacher Salaries	\$104,176	\$0	\$104,176	\$60,102	\$44,074	(\$0)
01622400-51110	MMS-Admin-Teacher Xtra days	\$2,366	\$0	\$2,366	\$0	\$0	\$2,366
01711001-51110	THS-Classroom-Teacher Salaries	\$11,004,604	\$0	\$11,004,604	\$6,445,670	\$4,462,352	\$96,581
01711003-51110	THS-Admin-Detention Duty	\$3,000	\$0	\$3,000	\$2,948	\$0	\$52
01711006-51110	THS-Ag Science-Teachers Salaries	\$590,970	\$0	\$590,970	\$374,819	\$216,151	\$1
01711016-51110	THS-Music-Teacher Salaries	\$458,728	\$0	\$458,728	\$156,285	\$94,763	\$207,680
01711019-51110	THS-PE/Health-Teacher Salaries	\$854,514	\$0	\$854,514	\$488,901	\$355,317	\$10,296
01711022-51110	THS-Alternate School-Teachers Salaries	\$398,956	\$0	\$398,956	\$229,543	\$166,406	\$3,008
01711028-51110	THS-Admin-Teacher Xtra Time	\$0	\$0	\$0	\$0	\$0	\$0
01712120-51110	THS-Guidance-Teacher Salaries	\$1,318,017	\$0	\$1,318,017	\$809,616	\$508,401	(\$0)
01712220-51110	THS-Library-Teacher Salaries	\$85,513	\$0	\$85,513	\$50,907	\$37,332	(\$2,726)
01802320-51119	Super-Personnel-Teacher Xtra Time	\$11,998	\$0	\$11,998	\$2,690	\$0	\$9,308
01912520-51196	D/W-Admin-Retirement/LOA Savings	\$0	\$0	\$0	\$0	\$0	\$0
01912520-51197	D/W-Admin-Degree Changes	\$70,000	\$0	\$70,000	\$0	\$0	\$70,000
Teachers Total		\$54,603,505	\$0	\$54,603,505	\$31,976,596	\$21,694,372	\$932,537
<u>Custodians/Maintenance</u>							
01842610-51140	Facilities-Custodial-Salaries	\$2,719,708	\$0	\$2,719,708	\$1,835,630	\$782,123	\$101,955
01842610-51141	Facilities-Custodial-Custodial OT	\$51,410	\$0	\$51,410	\$119,662	\$0	(\$68,252)
01842610-51142	Facilities-Custodial-School OT	\$74,545	\$0	\$74,545	\$91,593	\$0	(\$17,048)
01842610-51143	Facilities-Snow Removal-Salaries	\$20,000	\$0	\$20,000	\$34,750	\$0	(\$14,750)
01842610-51145	Facilities-Custodial- Custodial Support	\$6,698	\$0	\$6,698	\$5,171	\$0	\$1,527
01842610-51149	Facilities-Custodial-Custodial Night Diff	\$6,820	\$0	\$6,820	\$6,087	\$0	\$733
01852620-51140	Facilities-Maintenance-Salaries	\$769,057	\$0	\$769,057	\$542,374	\$207,030	\$19,653
01852620-51141	Facilities-Maintenance-Maint OT	\$22,848	\$0	\$22,848	\$14,351	\$0	\$8,497
01852620-51142	Facilities-Maintenance-Security Checks	\$574	\$0	\$574	\$430	\$0	\$144
01852620-51145	Facilities-Maintenance-Summer Help	\$41,000	\$0	\$41,000	\$31,673	\$0	\$9,327
Custodians/Maintenance Total		\$3,712,660	\$0	\$3,712,660	\$2,681,722	\$989,153	\$41,785
<u>Tech Support</u>							
01422220-51124	Tech-Dist A/V/Ch 17-Technician	\$39,698	\$0	\$39,698	\$0	\$0	\$39,698
01422520-51129	Tech-Admin-Other Technical	\$479,714	\$0	\$479,714	\$369,471	\$112,208	(\$1,965)
01422520-51141	Tech-Admin-Xtra Time/Help	\$15,000	\$0	\$15,000	\$9,854	\$0	\$5,146
Tech Support Total		\$534,412	\$0	\$534,412	\$379,325	\$112,208	\$42,879
<u>Administrative Support</u>							
01011000-51130	TECEC-Admin-Secy 12 Mth	\$0	\$0	\$0	\$18,413	\$5,599	(\$24,012)
01011000-51131	TECEC-Admin-Secy 10 Mth	\$48,862	\$0	\$48,862	\$30,069	\$19,217	(\$424)
01011000-51135	TECEC-Admin-Clerical Xtra Time	\$0	\$0	\$0	\$195	\$0	(\$195)
01011200-51130	PPS-Admin-Secy 12 Mth	\$121,107	\$0	\$121,107	\$69,612	\$23,283	\$28,211
01011200-51135	PPS-Admin-Clerical Xtra Time	\$0	\$0	\$0	\$858	\$0	(\$858)
01402320-51130	Asst Super-Admin-Secy 12 Mth	\$70,660	\$0	\$70,660	\$55,723	\$16,903	(\$1,966)
01402320-51135	Asst Super-Admin-Clerical Xtra Time	\$0	\$0	\$0	\$13	\$0	(\$13)
01412210-51130	Curr Dir-Admin-Secy 12 Mth	\$56,607	\$0	\$56,607	\$43,544	\$13,357	(\$294)
01412210-51135	Curr Dir-Admin-Clerical Xtra Time	\$0	\$0	\$0	\$542	\$0	(\$542)
01422520-51130	Tech-Admin-Secy 12 Mth	\$61,786	\$0	\$61,786	\$34,065	\$11,536	\$16,185
01422520-51135	Tech-Admin--Clerical Xtra Time	\$0	\$0	\$0	\$9	\$0	(\$9)
01512400-51130	BHES-Admin-Secy 12 Mth	\$61,786	\$0	\$61,786	\$47,527	\$14,581	(\$322)
01512400-51131	BHES-Admin-Secy 10 Mth	\$39,149	\$0	\$39,149	\$24,092	\$15,397	(\$339)
01512400-51135	BHES-Admin-Clerical Xtra Time	\$0	\$0	\$0	\$121	\$0	(\$121)
01522400-51130	FTES-Admin-Secy 12 Mth	\$61,786	\$0	\$61,786	\$47,977	\$14,581	(\$772)
01522400-51131	FTES-Admin-Secy 10 Mth	\$40,070	\$0	\$40,070	\$29,542	\$11,174	(\$646)
01522400-51135	FTES-Admin-Clerical Xtra Time	\$0	\$0	\$0	\$817	\$0	(\$817)
01532400-51130	DFES-Admin-Secy 12 Mth	\$61,786	\$0	\$61,786	\$48,120	\$14,581	(\$915)
01532400-51131	DFES-Admin-Secy 10 Mth	\$40,072	\$0	\$40,072	\$24,198	\$15,469	\$405
01532400-51135	DFES-Admin-Clerical Xtra Time	\$0	\$0	\$0	\$797	\$0	(\$797)
01542400-51130	MBES-Admin-Secy 12 Mth	\$61,786	\$0	\$61,786	\$35,346	\$14,581	\$11,859
01542400-51131	MBES-Admin-Secy 10 Mth	\$39,149	\$0	\$39,149	\$17,919	\$11,788	\$9,442
01542400-51135	MBES-Admin-Clerical Xtra Time	\$0	\$0	\$0	\$27	\$0	(\$27)
01552400-51130	JRES-Admin-Secy 12 Mth	\$61,786	\$0	\$61,786	\$48,120	\$14,581	(\$915)

**Trumbull Board of Education Expense vs Budget Detail
Report for the Period Ended 3/31/2022**

Account #	Account Description	Budget			Expended	Committed/ Estimates	Available/ (Over)
		Original	Transfers	Revised			
01552400-51131	JRES-Admin-Secy 10 Mth	\$39,703	\$0	\$39,703	\$24,433	\$15,614	(\$344)
01552400-51135	JRES-Admin-Clerical Xtra Time	\$0	\$0	\$0	\$1,601	\$0	(\$1,601)
01582400-51130	TES-Admin-Secy 12 Mth	\$61,786	\$0	\$61,786	\$47,777	\$14,581	(\$572)
01582400-51131	TES-Admin-Secy 10 Mth	\$36,972	\$0	\$36,972	\$22,752	\$14,538	(\$318)
01582400-51135	TES-Admin-Clerical Xtra Time	\$0	\$0	\$0	\$7	\$0	(\$7)
01612120-51131	HMS-Guidance-Secy 10 Mth	\$48,862	\$0	\$48,862	\$29,842	\$19,217	(\$196)
01612120-51135	HMS-Guidance-Clerical Xtra Time	\$0	\$0	\$0	\$64	\$0	(\$64)
01612400-51130	HMS-Admin-Secy 12 Mth	\$61,786	\$0	\$61,786	\$47,483	\$14,581	(\$278)
01612400-51131	HMS-Admin-Secy 10 Mth	\$39,100	\$0	\$39,100	\$24,822	\$15,903	(\$1,625)
01612400-51135	HMS-Admin-Clerical Xtra Time	\$0	\$0	\$0	\$618	\$0	(\$618)
01622120-51131	MMS-Guidance-Secy 10 Mth	\$49,320	\$0	\$49,320	\$30,737	\$19,397	(\$814)
01622120-51135	MMS-Guidance-Clerical Xtra Time	\$0	\$0	\$0	\$117	\$0	(\$117)
01622400-51130	MMS-Admin-Secy 12 Mth	\$61,786	\$0	\$61,786	\$47,998	\$14,581	(\$793)
01622400-51131	MMS-Admin-Secy 10 Mth	\$48,862	\$0	\$48,862	\$30,069	\$19,217	(\$424)
01622400-51135	MMS-Admin-Clerical Xtra Time	\$0	\$0	\$0	\$44	\$0	(\$44)
01711006-51131	THS-Ag Science-Secy 10 Mths	\$36,992	\$0	\$36,992	\$23,014	\$14,548	(\$571)
01711006-51135	THS-Ag Science-Secy Xtra Time	\$492	\$0	\$492	\$256	\$0	\$236
01711022-51131	THS-Alternate School-Secy 10 Mths	\$0	\$0	\$0	\$0	\$0	\$0
01712120-51130	THS-Guidance-Secy 12 Mths	\$177,966	\$0	\$177,966	\$137,187	\$41,994	(\$1,215)
01712120-51135	THS-Guidance-Clerical Xtra Time	\$0	\$0	\$0	\$32	\$0	(\$32)
01712220-51130	THS-Library-Secy 12 Mths	\$0	\$0	\$0	\$14,721	\$7,162	(\$21,883)
01712220-51131	THS-Library-Secy 10 Mths	\$25,682	\$0	\$25,682	\$4,457	\$23,347	(\$2,122)
01712220-51135	THS-Library-Clerical Xtra Time	\$0	\$0	\$0	\$7	\$0	(\$7)
01712400-51130	THS-Admin-Secy 12 Mth	\$121,107	\$0	\$121,107	\$78,849	\$25,664	\$16,594
01712400-51131	THS-Admin-Secy 10 Mth	\$146,365	\$0	\$146,365	\$95,797	\$51,920	(\$1,352)
01712400-51135	THS-Admin-Clerical Xtra Time	\$239	\$0	\$239	\$739	\$0	(\$500)
01713201-51131	Sports-Sports General-Secy 10 Mths	\$49,320	\$0	\$49,320	\$35,638	\$13,754	(\$72)
01713201-51135	Sports-Sports Gen-Clerical Xtra Time	\$3,135	\$0	\$3,135	\$3,192	\$0	(\$57)
01741200-51130	Continuing Ed-Admin-Secy	\$0	\$0	\$0	\$0	\$0	\$0
01802320-51115	Super-Personnel-Support Staff	\$165,629	\$0	\$165,629	\$130,905	\$38,987	(\$4,263)
01802320-51131	Super-Personnel-Support Staff-10 Mth	\$44,529	\$0	\$44,529	\$27,403	\$17,515	(\$388)
01802320-51135	Super-Personnel-Clerical Xtra Time	\$1,863	\$0	\$1,863	\$3,258	\$0	(\$1,395)
01822230-51130	Facilities-Admin-Secy 12 Mth	\$125,367	\$0	\$125,367	\$97,536	\$29,586	(\$1,755)
01822230-51135	Facilities-Admin-Clerical Xtra Time	\$0	\$0	\$0	\$178	\$0	(\$178)
01882700-51130	Trans-Admin-Secy 12 Mth	\$96,886	\$0	\$96,886	\$81,467	\$24,992	(\$9,573)
01882700-51131	Trans-Admin-Secy 10 Mth	\$0	\$0	\$0	\$0	\$0	\$0
01882700-51135	Trans-Admin-Clerical Xtra Time	\$3,890	\$0	\$3,890	\$4,856	\$0	(\$966)
01902310-51136	Super-BOE-Secy-BOE Mtgs	\$4,500	\$0	\$4,500	\$2,225	\$0	\$2,275
01902320-51130	Super-Admin-Support Staff	\$144,306	\$0	\$144,306	\$120,419	\$35,859	(\$11,972)
01902320-51135	Super-Admin-Clerical Xtra Time	\$0	\$0	\$0	\$81	\$0	(\$81)
01912520-51130	Bus Off-Admin-Support 12 Mth	\$286,467	\$0	\$286,467	\$222,278	\$67,248	(\$3,059)
01912520-51135	Bus Off-Admin-Support-Clerical Xtra Time	\$1,500	\$0	\$1,500	\$5,047	\$0	(\$3,547)
01922530-51135	Asst Super-Admin-Clerical Xtra Time	\$0	\$0	\$0	\$479	\$0	(\$479)
Administrative Support Total		\$2,710,804	\$0	\$2,710,804	\$1,976,031	\$756,833	(\$22,060)
Paras & Aides							
01011000-51120	TECEC-Classroom-Paras	\$178,158	\$0	\$178,158	\$151,901	\$54,456	(\$28,199)
01011000-51122	TECEC-Classroom-ABA Paras	\$216,379	\$0	\$216,379	\$165,706	\$72,225	(\$21,552)
01011200-51120	PPS-L/W-Instructional Paras	\$1,928,354	\$0	\$1,928,354	\$1,600,660	\$687,917	(\$360,223)
01011200-51121	PPS-D/W-Para Xtra Time	\$200,000	\$0	\$200,000	\$32,955	\$18,000	\$149,045
01011200-51122	PPS-L/W-ABA Paras	\$1,031,217	\$0	\$1,031,217	\$781,304	\$357,521	(\$107,607)
01032130-51128	PPS-L/W-Health Aides	\$79,259	\$0	\$79,259	\$59,402	\$25,765	(\$5,909)
01371200-51122	PPS-ESY-ABA Paras	\$80,000	\$0	\$80,000	\$81,993	\$0	(\$1,993)
01371200-51128	PPS-ESY-Health Aides	\$7,000	\$0	\$7,000	\$5,165	\$0	\$1,835
01371200-51129	PPS-ESY-Para	\$47,000	\$0	\$47,000	\$41,230	\$0	\$5,770
01412210-51120	PPS-D/W-Para Training	\$14,250	\$0	\$14,250	\$8,025	\$6,225	\$0
01511001-51120	BHES-Classroom-Instructional Aides	\$64,293	\$0	\$64,293	\$19,233	\$12,000	\$33,060
01512400-51120	BHES-Admin-Paras	\$19,315	\$0	\$19,315	\$9,360	\$3,000	\$6,955
01521001-51120	FTES-Classroom-Instructional Aides	\$72,014	\$0	\$72,014	\$16,305	\$9,000	\$46,709
01522400-51120	FTES-Admin-Paras	\$18,278	\$0	\$18,278	\$25,852	\$11,476	(\$19,050)
01531001-51120	DFES-Classroom-Instructional Aides	\$54,539	\$0	\$54,539	\$14,016	\$7,500	\$33,023
01532400-51120	DFES-Admin-Paras	\$9,443	\$0	\$9,443	\$13,208	\$6,000	(\$9,765)
01541001-51120	MBES-Classroom-Instructional Aides	\$66,429	\$0	\$66,429	\$7,518	\$3,600	\$55,311
01542400-51120	MBES-Admin-Paras	\$9,655	\$0	\$9,655	\$7,709	\$3,900	(\$1,954)
01551001-51120	JRES-Classroom-Instructional Aides	\$46,984	\$0	\$46,984	\$17,880	\$8,100	\$21,004
01552400-51120	JRES-Admin-Paras	\$10,094	\$0	\$10,094	\$13,889	\$6,300	(\$10,095)
01581001-51120	TES-Classroom-Instructional Aides	\$57,299	\$0	\$57,299	\$16,947	\$9,000	\$31,352
01582400-51120	TES-Admin-Paras	\$9,443	\$0	\$9,443	\$13,005	\$6,300	(\$9,862)
01612220-51120	HMS-Library-Paras	\$0	\$0	\$0	\$0	\$0	\$0
01612400-51120	HMS-Admin-Admin Para	\$11,961	\$0	\$11,961	\$9,212	\$4,070	(\$1,322)
01622220-51120	MMS-Library-Paras	\$0	\$0	\$0	\$0	\$0	\$0
01622400-51120	MMS-Admin-Admin Para	\$12,504	\$0	\$12,504	\$33,694	\$10,369	(\$31,559)
01712400-51120	THS-L/W-Paras	\$126,078	\$0	\$126,078	\$55,334	\$23,978	\$46,766

**Trumbull Board of Education Expense vs Budget Detail
Report for the Period Ended 3/31/2022**

Account #	Account Description	Budget			Expended	Committed/ Estimates	Available/ (Over)
		Original	Transfers	Revised			
	Paras & Aides Total	\$4,369,946	\$0	\$4,369,946	\$3,201,504	\$1,346,702	(\$178,259)
<u>Substitutes</u>							
01802320-51113	Substitute Administrators	\$0	\$0	\$0	\$76,911	\$0	(\$76,911)
01802320-51117	Substitute Teachers	\$708,209	\$0	\$708,209	\$505,337	\$216,011	(\$13,139)
01802320-51129	Substitute Paraprofessionals	\$88,616	\$0	\$88,616	\$121,007	\$60,000	(\$92,391)
01802320-51139	Substitute Secretaries	\$14,610	\$0	\$14,610	\$30,852	\$12,000	(\$28,242)
01802320-51140	Substitute Custodians/Maint/Security	\$61,000	\$0	\$61,000	\$31,616	\$12,000	\$17,384
	Substitutes Total	\$872,435	\$0	\$872,435	\$765,722	\$300,011	(\$193,298)
<u>Coaches & Advisors</u>							
01613202-51116	HMS-Activities-Advisors	\$35,000	\$0	\$35,000	\$0	\$35,000	\$0
01623202-51116	MMS-Activities-Advisors	\$35,000	\$0	\$35,000	\$2,635	\$32,365	\$0
01711016-51116	THS-Music-Directors	\$18,419	\$0	\$18,419	\$0	\$18,419	\$0
01713202-51116	THS-Activities-Advisors	\$115,000	\$0	\$115,000	\$7,554	\$107,446	\$0
01713201-51116	Sports-Sports General-Coaches	\$491,626	\$0	\$491,626	\$16,644	\$142,586	\$332,396
01723301-51116	Sports-Baseball-Coaches	\$0	\$0	\$0	\$0	\$0	\$0
01723302-51116	Sports-Basketball-Coaches	\$0	\$0	\$0	\$39,284	\$0	(\$39,284)
01723303-51116	Sports-Field Hockey-Coaches	\$0	\$0	\$0	\$17,905	\$0	(\$17,905)
01723304-51116	Sports-Football-Coaches	\$0	\$0	\$0	\$46,460	\$0	(\$46,460)
01723305-51116	Sports-Ice Hockey-Coaches	\$0	\$0	\$0	\$27,196	\$0	(\$27,196)
01723306-51116	Sports-Lacrosse-Coaches	\$0	\$0	\$0	\$0	\$0	\$0
01723307-51116	Sports-Soccer-Coaches	\$0	\$0	\$0	\$37,018	\$0	(\$37,018)
01723308-51116	Sports-Swimming-Coaches	\$0	\$0	\$0	\$20,548	\$0	(\$20,548)
01723309-51116	Sports-Tennis-Coaches	\$0	\$0	\$0	\$0	\$0	\$0
01723310-51116	Sports-Indoor Track-Coaches	\$0	\$0	\$0	\$24,172	\$0	(\$24,172)
01723311-51116	Sports-Volleyball-Coaches	\$0	\$0	\$0	\$13,598	\$0	(\$13,598)
01723312-51116	Sports-Wrestling-Coaches	\$0	\$0	\$0	\$19,642	\$0	(\$19,642)
01723313-51116	Sports-Outdoor Track-Coaches	\$0	\$0	\$0	\$0	\$0	\$0
01723314-51116	Sports-Softball-Coaches	\$0	\$0	\$0	\$0	\$0	\$0
01723315-51116	Sports-Gymnastics-Coaches	\$0	\$0	\$0	\$11,332	\$0	(\$11,332)
01723316-51116	Sports-Golf-Coaches	\$0	\$0	\$0	\$3,069	\$0	(\$3,069)
01723317-51116	Sports-Cross Country-Coaches	\$0	\$0	\$0	\$27,196	\$0	(\$27,196)
01723318-51116	Sports-Cheerleading-Coaches	\$0	\$0	\$0	\$19,047	\$0	(\$19,047)
01723319-51116	Sports-Weight Training-Coaches	\$0	\$0	\$0	\$16,845	\$0	(\$16,845)
	Coaches Total	\$491,626	\$0	\$491,626	\$339,956	\$142,586	\$9,084
	Coaches & Advisors Total	\$695,045	\$0	\$695,045	\$350,145	\$335,816	\$9,084
<u>Salaries Other</u>							
01011201-51117	PPS-L/W-Tutors Homebound	\$105,738	\$0	\$105,738	\$19,535	\$30,000	\$56,203
01011203-51117	PPS-L/W-Tutors Tutorial	\$61,684	\$0	\$61,684	\$30,445	\$25,000	\$6,239
01011204-51117	PPS-L/W-Tutors Expulsions	\$12,668	\$0	\$12,668	\$0	\$0	\$12,668
01032130-51123	PPS-L/W-OT/PT Therapists	\$506,579	\$0	\$506,579	\$317,447	\$237,542	(\$48,409)
01331200-51126	PPS-SPED-Work Experience	\$5,500	\$0	\$5,500	\$4,684	\$0	\$816
01401201-51117	Asst Super-L/W-Tutors Homebound	\$0	\$0	\$0	\$1,396	\$0	(\$1,396)
01401203-51117	Asst Super-L/W-Tutors Tutorial	\$0	\$0	\$0	\$3,451	\$0	(\$3,451)
01401204-51117	Asst Super-L/W-Tutors Expulsions	\$0	\$0	\$0	\$0	\$0	\$0
01412210-51129	Curr Dir-D/W-Other Non-Certified	\$72,978	\$0	\$72,978	\$57,261	\$17,178	(\$1,461)
01512400-51121	BHES-Admin-Lunch Aides	\$0	\$0	\$0	\$0	\$0	\$0
01522400-51121	FTES-Admin-Lunch Aides	\$0	\$0	\$0	\$0	\$0	\$0
01532400-51121	DFES-Admin-Lunch Aides	\$0	\$0	\$0	\$0	\$0	\$0
01542400-51121	MBES-Admin-Lunch Aides	\$0	\$0	\$0	\$0	\$0	\$0
01552400-51121	JRES-Admin-Lunch Aides	\$0	\$0	\$0	\$0	\$0	\$0
01582400-51121	TES-Admin-Lunch Aides	\$0	\$0	\$0	\$0	\$0	\$0
01711006-51129	THS-Ag Science-Misc Salaries	\$8,500	\$0	\$8,500	\$2,575	\$1,500	\$4,425
01741200-51110	Continuing Ed-Classroom Instructors	\$0	\$0	\$0	\$0	\$0	\$0
01802320-51127	Substitute-Security Guards	\$0	\$0	\$0	\$9,256	\$0	(\$9,256)
01822230-51127	Facilities-D/W-Security Guards	\$691,118	\$0	\$691,118	\$457,025	\$231,524	\$2,569
01822230-51128	Facilities-D/W-Security Guards OT	\$70,000	\$0	\$70,000	\$39,396	\$0	\$30,604
01882700-51150	Bus Monitors	\$0	\$0	\$0	\$0	\$0	\$0
01922530-51129	Asst Super-Info Svcs-Oth Non-Certified	\$50,000	\$0	\$50,000	\$53,968	\$16,191	(\$20,159)
	Salaries Other	\$1,584,765	\$0	\$1,584,765	\$996,439	\$558,934	\$29,392
<u>Misc Salary Items</u>							
01912520-51198	D/W-Admin-Retiree Payments	\$283,668	\$0	\$283,668	\$250,858	\$0	\$32,810
01912520-51199	D/W-Admin-Reserve For Negotiations	\$25,000	\$0	\$25,000	\$0	\$0	\$25,000
	Misc Salary Items Total	\$308,668	\$0	\$308,668	\$250,858	\$0	\$57,810

**Trumbull Board of Education Expense vs Budget Detail
Report for the Period Ended 3/31/2022**

<u>Account #</u>	<u>Account Description</u>	<u>Budget</u>			<u>Expended</u>	<u>Committed/ Estimates</u>	<u>Available/ (Over)</u>
		<u>Original</u>	<u>Transfers</u>	<u>Revised</u>			
	Salaries Total	\$74,064,685	\$0	\$74,064,685	\$46,171,971	\$27,184,429	\$708,285
Employee Benefits					\$40,260,138 (\$5,911,833)	\$33,332,274 (\$6,147,845)	\$472,273 \$236,012
Health Insurance							
01912520-52002	Benefits-Health & Dental	\$16,201,647	\$0	\$16,201,647	\$15,305,840	\$5,280,101	(\$4,384,294)
01912520-52011	Benefits-Health Premium Share - Medical	\$0	\$0	\$0	(\$3,126,232)	(\$1,444,123)	\$4,570,355
01912520-52012	Benefits-Health Premium Share - Dental	\$0	\$0	\$0	(\$210,926)	(\$69,765)	\$280,691
	Health Insurance Total	\$16,201,647	\$0	\$16,201,647	\$11,968,682	\$3,766,213	\$466,752
FICA							
01912520-52001	Benefits-FICA	\$1,882,323	\$0	\$1,882,323	\$1,243,345	\$638,978	\$0
	FICA	\$1,882,323	\$0	\$1,882,323	\$1,243,345	\$638,978	\$0
Other Insurance							
01912520-52003	D/W-Admin-Medical Waiver	\$200,983	\$0	\$200,983	\$166,574	\$34,409	\$0
01912520-52004	Benefits-Disability Insurance	\$20,403	\$0	\$20,403	\$14,824	\$5,001	\$579
01912520-52005	Benefits-Life Insurance	\$115,115	\$0	\$115,115	\$79,550	\$28,435	\$7,129
	Other Insurance Total	\$336,501	\$0	\$336,501	\$260,948	\$67,845	\$7,708
Unemployment							
01912520-52006	D/W-Admin-Unemployment	\$130,000	\$0	\$130,000	\$23,960	\$16,040	\$90,000
	Unemployment Total	\$130,000	\$0	\$130,000	\$23,960	\$16,040	\$90,000
Benefits Other							
01912520-52008	Benefits-Administrative Fees	\$18,821	\$0	\$18,821	\$10,286	\$2,566	\$5,969
01912520-52010	Benefits-TBOE 401a Contribution	\$174,774	\$0	\$174,774	\$157,709	\$57,664	(\$40,599)
	Benefits Other Total	\$193,595	\$0	\$193,595	\$167,995	\$60,230	(\$34,630)
	Employee Benefits Total	\$18,744,066	\$0	\$18,744,066	\$13,664,930	\$4,549,306	\$529,830
Purchased Professional Services							
Legal							
01011200-53308	PPS-Admin-Legal SPED	\$140,000	\$0	\$140,000	\$75,528	\$64,472	\$0
01902310-53308	Super-BOE-Legal-Reg Ed	\$120,000	\$0	\$120,000	\$52,247	\$58,728	\$9,025
	Legal Total	\$260,000	\$0	\$260,000	\$127,775	\$123,200	\$9,025
Service Contracts							
01011200-53300	PPS-Admin-Prof Purch'd Services	\$69,525	\$0	\$69,525	\$59,382	\$0	\$10,143
01052130-53305	PPS-Health Services-Service Contracts	\$55,000	\$0	\$55,000	\$37,128	\$20,348	(\$2,476)
01422520-53305	Tech-Admin-Maintenance Contracts	\$31,000	\$0	\$31,000	\$30,427	(\$0)	\$573
01882700-53303	Trans-Admin-Software Support	\$7,000	\$0	\$7,000	\$7,411	\$0	(\$411)
01922530-53301	Bus off-Admin-Prof Purch'd Svcs	\$80,000	\$0	\$80,000	\$80,117	\$0	(\$117)
01922530-53302	Asst Super-Info Svcs-Dbase Students	\$172,562	\$0	\$172,562	\$170,713	\$0	\$1,849
	Service Contracts Total	\$415,087	\$0	\$415,087	\$385,179	\$20,348	\$9,560
Consultants							
01011200-53230	PPS-L/W-Consultants	\$225,000	\$0	\$225,000	\$134,578	\$112,170	(\$21,747)
	Consultants Total	\$225,000	\$0	\$225,000	\$134,578	\$112,170	(\$21,747)
Other Professional Services							
01011000-53301	PPS-Police Services	\$0	\$0	\$0	\$0	\$0	\$0
01412210-53300	Curr Dir-D/W-Other Professional Svcs	\$19,000	\$0	\$19,000	\$3,330	\$0	\$15,670
01422214-53300	Tech-L/W-Other Professional Svcs	\$4,800	\$0	\$4,800	\$880	\$326	\$3,594
01422220-53300	Tech-Dist AV/Ch17-Other Prof Svcs	\$4,100	\$0	\$4,100	\$0	\$0	\$4,100
01422520-53300	Tech-Admin-Other Professional Svcs	\$10,600	\$0	\$10,600	\$6,677	\$0	\$3,923
01512400-53301	BH-Police Services	\$0	\$0	\$0	\$0	\$0	\$0
01522400-53301	FT-Police Services	\$0	\$0	\$0	\$0	\$0	\$0
01532400-53301	DF-Police Services	\$0	\$0	\$0	\$0	\$0	\$0
01542400-53301	MB-Police Services	\$0	\$0	\$0	\$0	\$0	\$0
01552400-53301	JR-Police Services	\$0	\$0	\$0	\$0	\$0	\$0
01582400-53301	TA-Police Services	\$0	\$0	\$0	\$0	\$0	\$0
01613202-53301	HMS-Activities-Police	\$700	\$0	\$700	\$296	\$0	\$404

**Trumbull Board of Education Expense vs Budget Detail
Report for the Period Ended 3/31/2022**

Account #	Account Description	Budget			Expended	Committed/ Estimates	Available/ (Over)
		Original	Transfers	Revised			
01623202-53301	MMS-Activities-Police	\$700	\$0	\$700	\$296	\$0	\$404
01711016-53300	THS-Music-Other Professional Svcs	\$43,500	\$0	\$43,500	\$37,615	\$0	\$5,885
01712120-53220	THS-Guidance-Career Guidance	\$1,000	\$0	\$1,000	\$214	(\$0)	\$786
01712400-53301	THS-Admin-Police Services	\$65,000	\$0	\$65,000	\$69,301	\$40,699	(\$45,000)
01741200-53300	Continuing Ed-Admin-In Service	\$0	\$0	\$0	\$0	\$0	\$0
01852647-53300	Facilities-Bldg Improvement-Oth Prof Svcs	\$7,000	\$0	\$7,000	\$6,240	\$0	\$760
01882700-53300	Transportation-Professional Svcs	\$0	\$0	\$0	\$0	\$0	\$0
01902310-53300	Super-BOE-Professional Services	\$24,000	\$0	\$24,000	\$25,042	\$1,405	(\$2,447)
01912520-53300	Bus Off-Admin-Professional Svcs	\$500	\$0	\$500	\$0	\$0	\$500
01912520-53310	Bus Off-Admin-Athletic Insurance	\$90,000	\$0	\$90,000	\$92,602	\$0	(\$2,602)
01713201-53300	Sports-Sports General-Purch'd Svcs	\$189,000	\$0	\$189,000	\$136,474	\$32,230	\$20,297
01723301-53300	Sports-Baseball-Purch'd Svcs	\$0	\$0	\$0	\$0	\$0	\$0
01723302-53300	Sports-Basketball-Purch'd Svcs	\$0	\$0	\$0	\$0	\$0	\$0
01723304-53300	Sports-Field Hockey-Purch'd Svcs	\$0	\$0	\$0	\$0	\$0	\$0
01723304-53300	Sports-Football-Purch'd Svcs	\$0	\$0	\$0	\$0	\$0	\$0
01723305-53300	Sports-Ice Hockey-Purch'd Svcs	\$0	\$0	\$0	\$0	\$0	\$0
01723306-53300	Sports-Lacrosse-Purch'd Svcs	\$0	\$0	\$0	\$0	\$0	\$0
01723307-53300	Sports-Soccer-Purch'd Svcs	\$0	\$0	\$0	\$0	\$0	\$0
01723308-53300	Sports-Swimming-Purch'd Svcs	\$0	\$0	\$0	\$0	\$0	\$0
01723312-53300	Sports-Wrestling-Purch'd Svcs	\$0	\$0	\$0	\$0	\$0	\$0
01723315-53300	Sports-Gymnastics-Purch'd Svcs	\$0	\$0	\$0	\$0	\$0	\$0
01723317-53300	Sports-Cross Country-Purch'd Svcs	\$0	\$0	\$0	\$0	\$0	\$0
01723318-53300	Sports-Cheerleading-Purch'd Svcs	\$0	\$0	\$0	\$0	\$0	\$0
	Other Professional Services Total	\$459,900	\$0	\$459,900	\$378,967	\$74,660	\$6,273
	Purchased Professional Services Total	\$1,359,987	\$0	\$1,359,987	\$1,026,499	\$330,377	\$3,111
<u>Purchased Property Services</u>							
<u>Utilities</u>							
01842611-54101	Facilities-D/W-Electricity	\$1,160,000	\$0	\$1,160,000	\$771,312	\$371,853	\$16,835
01842611-54105	Facilities-D/W-Water	\$129,000	\$0	\$129,000	\$82,757	\$46,767	(\$524)
	Utilities Total	\$1,289,000	\$0	\$1,289,000	\$854,069	\$418,620	\$16,311
<u>Repairs & Service Fees</u>							
01052130-54300	PPS-Health Svcs-Repairs & Svc Fees	\$5,000	\$0	\$5,000	\$0	\$0	\$5,000
01422214-54300	Tech-L/W-Repairs & Svc Fees	\$1,200	\$0	\$1,200	\$0	\$0	\$1,200
01422220-54300	Tech-Dist AV/Ch17-Repairs & Svc Fees	\$500	\$0	\$500	\$0	\$0	\$500
01422520-54300	Tech-Admin-Repairs & Svc Fees	\$1,800	\$0	\$1,800	\$0	\$0	\$1,800
01711006-54300	THS-Ag Science-Repairs & Svc Fees	\$3,000	\$0	\$3,000	\$3,119	\$2,500	(\$2,619)
01842610-54300	Facilities-Custodial-Repairs	\$8,000	\$0	\$8,000	\$409	\$420	\$7,171
01852622-54300	Facilities-Snow Removal-Repairs & Svc Fees	\$20,000	\$0	\$20,000	\$0	\$5,000	\$15,000
01852623-54300	Facilities-Vehicles-Repairs & Svc Fees	\$14,000	\$0	\$14,000	\$1,625	\$140	\$12,235
01852625-54300	Facilities-Grounds-Repairs & Svc Fees	\$20,000	\$0	\$20,000	\$890	\$9,510	\$9,600
01852627-54300	Facilities-Lawn Care-Repairs & Svc Fees	\$0	\$0	\$0	\$5,795	\$0	(\$5,795)
01852631-54300	Facilities-Maintenance-Repairs & Svc Fees	\$35,000	\$0	\$35,000	\$35,853	\$14,109	(\$14,963)
01852632-54300	Facilities-Inside Maint-Repairs & Svc Fees	\$15,000	\$0	\$15,000	\$5,066	\$0	\$9,934
01852633-54300	Facilities-Electrical-Repairs & Svc Fees	\$50,000	\$0	\$50,000	(\$1,866)	\$6,317	\$45,549
01852633-54301	Facilities-Security-Service Contracts	\$0	\$0	\$0	\$0	\$0	\$0
01852634-54300	Facilities-Fire Protection-Repairs & Svc Fees	\$0	\$0	\$0	\$28,109	\$17,653	(\$45,762)
01852635-54300	Facilities-Floor-Repairs & Svc Fees	\$0	\$0	\$0	\$47,793	\$0	(\$47,793)
01852637-54300	Facilities-Glass-Repairs & Svc Fees	\$0	\$0	\$0	\$7,729	\$2,792	(\$10,521)
01852639-54300	Facilities-HVAC-Repairs & Svc Fees	\$100,000	\$0	\$100,000	\$92,163	\$88,298	(\$80,461)
01852643-54300	Facilities-Equipment-Repairs & Svc Fees	\$0	\$0	\$0	\$0	\$0	\$0
01852644-54300	Facilities-Plumbing-Repairs & Svc Fees	\$10,000	\$0	\$10,000	\$320	\$1,998	\$7,682
01852645-54300	Facilities-Roofing-Repairs & Svc Fees	\$40,000	\$0	\$40,000	\$47,010	\$1,998	(\$9,008)
01852646-54300	Facilities-Pest Control-Repairs & Svc Fees	\$0	\$0	\$0	\$6,961	\$2,925	(\$9,886)
01852647-54300	Facilities-Bldg Improve-Repairs & Svc Fees	\$15,000	\$0	\$15,000	\$17,696	\$999	(\$3,695)
01852648-54300	Facilities-IAQ-Repairs & Svc Fees	\$10,000	\$0	\$10,000	\$6,649	\$10,316	(\$6,965)
01852649-54300	Facilities-Welding-Repairs & Svc Fees	\$0	\$0	\$0	\$20	\$0	(\$20)
	Repairs & Service Fees Total	\$348,500	\$0	\$348,500	\$305,340	\$164,975	(\$121,815)
<u>Copiers</u>							
01422520-54409	D/W Copiers	\$0	\$0	\$0	\$163,320	\$81,660	(\$244,980)
01902320-54409	D/W-Admin-Copiers	\$265,000	\$0	\$265,000	\$6,044	\$2,753	\$256,203
	Copiers Total	\$265,000	\$0	\$265,000	\$169,364	\$84,413	\$11,223
<u>Other Purchased Property Services</u>							
01512400-54900	BHES-Admin-Other Purch'd Svcs	\$300	\$0	\$300	\$0	\$0	\$300

**Trumbull Board of Education Expense vs Budget Detail
Report for the Period Ended 3/31/2022**

Account #	Account Description	Budget			Expended	Committed/ Estimates	Available/ (Over)
		Original	Transfers	Revised			
01522400-54900	FTES-Admin-Other Purch'd Svcs	\$300	\$0	\$300	\$0	\$0	\$300
01532400-54900	DFES-Admin-Other Purch'd Svcs	\$500	\$0	\$500	\$0	\$0	\$500
01542400-54900	MBES-Admin-Other Purch'd Svcs	\$300	\$0	\$300	\$0	\$0	\$300
01552400-54900	JRES-Admin-Other Purch'd Svcs	\$500	\$0	\$500	\$356	\$0	\$144
01582400-54900	TES-Admin-Other Purch'd Svcs	\$300	\$0	\$300	\$0	\$0	\$300
01611016-54900	HMS-Music-Other Purch'd Property Svcs	\$1,200	\$0	\$1,200	\$640	\$500	\$60
01612400-54900	HMS-Classroom-Other Purch'd Svcs	\$1,700	\$0	\$1,700	\$0	\$0	\$1,700
01621016-54900	MMS-Music-Other Purch'd Property Svcs	\$1,200	\$0	\$1,200	\$0	\$635	\$565
01622400-54900	MMS-Classroom-Other Purch'd Svcs	\$1,700	\$0	\$1,700	\$741	\$0	\$959
01711001-54900	THS-Classroom-Other Purch'd Property Svcs	\$0	\$0	\$0	\$0	\$0	\$0
01711006-54900	THS-Ag Science-Other Purch'd Prop Svcs	\$3,000	\$0	\$3,000	\$2,616	\$0	\$384
01711014-54900	THS-Industrial Arts-Other Purch'd Prop Svcs	\$0	\$0	\$0	\$0	\$0	\$0
01711016-54201	THS-Music-Uniform Cleaning	\$1,500	\$0	\$1,500	\$0	\$0	\$1,500
01713201-54200	Sports-Sports General-Cleaning Svcs	\$15,000	\$0	\$15,000	\$3,617	\$5,647	\$5,736
01842610-54103	Facilities-Custodial-Trash/Recycling	\$50,000	\$0	\$50,000	\$48,331	\$16,407	(\$14,738)
01842610-54202	Facilities-Custodial-Cleaning	\$3,900	\$0	\$3,900	\$2,784	\$1,016	\$100
01852631-54301	Facilities-Maint-Oth Prof Purch'd Svcs	\$30,000	\$0	\$30,000	\$22,898	\$7,342	(\$240)
01852633-54301	Facilities-Elevator-Oth Prof Purch'd Svcs	\$0	\$0	\$0	\$0	\$0	\$0
01882700-54900	Trans-Admin-Purch'd Property Svcs	\$500	\$0	\$500	\$0	\$0	\$500
	Other Purch'd Property Services Total	\$111,900	\$0	\$111,900	\$81,983	\$31,546	(\$1,629)
	Purchased Property Services Total	\$2,014,400	\$0	\$2,014,400	\$1,410,755	\$699,554	(\$95,910)
<u>Purchased Other Services</u>							
<u>Transportation</u>							
01711006-55809	THS-Ag Science-Transportation	\$2,629	\$0	\$2,629	\$995	\$1,000	\$634
01711016-55809	THS-Music-Transportation	\$15,000	\$0	\$15,000	\$4,517	\$4,222	\$6,261
01711022-55809	THS-Alternate School-Field Trips	\$1,000	\$0	\$1,000	\$0	\$0	\$1,000
01713202-55807	THS-Activities-Competitions	\$45,000	\$0	\$45,000	\$2,917	\$0	\$42,083
01882700-55101	Trans-Admin-Reg Buses	\$3,354,190	\$0	\$3,354,190	\$1,954,302	\$1,366,336	\$33,553
01882700-55102	Trans-Admin-ACE Trips	\$3,000	\$0	\$3,000	\$0	\$0	\$3,000
01882700-55105	Trans-Admin-SPED-Summer Buses	\$163,200	\$0	\$163,200	\$256,739	\$0	(\$93,539)
01882700-55109	Trans-Admin-Fuel	\$200,000	\$0	\$200,000	\$187,018	\$20,996	(\$8,014)
01882700-55809	Trans-Admin-Field Trips	\$0	\$0	\$0	\$908	\$8,368	(\$9,276)
01882701-55101	Trans-Admin-SPED In District	\$1,265,675	\$0	\$1,265,675	\$844,449	\$421,226	\$0
01882701-55105	Trans-Admin-SPED Out of District	\$721,900	\$0	\$721,900	\$583,060	\$141,392	(\$2,552)
01882701-55108	Trans-Admin-Monitors	\$254,113	\$0	\$254,113	\$113,008	\$141,105	\$0
01713201-55809	THS-Activities-Sports	\$127,000	\$0	\$127,000	\$75,639	\$6,361	\$45,000
01723301-55809	Sports-Baseball-Buses	\$0	\$0	\$0	\$0	\$0	\$0
01723302-55809	Sports-Basketball-Buses	\$0	\$0	\$0	\$0	\$0	\$0
01723303-55809	Sports-Field Hockey-Buses	\$0	\$0	\$0	\$0	\$0	\$0
01723304-55809	Sports-Football-Buses	\$0	\$0	\$0	\$0	\$0	\$0
01723305-55809	Sports-Ice Hockey-Buses	\$0	\$0	\$0	\$0	\$0	\$0
01723306-55809	Sports-Lacrosse-Buses	\$0	\$0	\$0	\$0	\$0	\$0
01723307-55809	Sports-Soccer-Buses	\$0	\$0	\$0	\$0	\$0	\$0
01723308-55809	Sports-Swimming-Buses	\$0	\$0	\$0	\$0	\$0	\$0
01723309-55809	Sports-Tennis-Buses	\$0	\$0	\$0	\$0	\$0	\$0
01723310-55809	Sports-Indoor Track-Buses	\$0	\$0	\$0	\$0	\$0	\$0
01723311-55809	Sports-Volleyball-Buses	\$0	\$0	\$0	\$0	\$0	\$0
01723312-55809	Sports-Wrestling-Buses	\$0	\$0	\$0	\$0	\$0	\$0
01723313-55809	Sports-Outdoor Track-Buses	\$0	\$0	\$0	\$0	\$0	\$0
01723314-55809	Sports-Softball-Buses	\$0	\$0	\$0	\$0	\$0	\$0
01723315-55809	Sports-Gymnastics-Buses	\$0	\$0	\$0	\$0	\$0	\$0
01723316-55809	Sports-Golf-Buses	\$0	\$0	\$0	\$0	\$0	\$0
01723317-55809	Sports-Cross Country-Buses	\$0	\$0	\$0	\$0	\$0	\$0
01723318-55809	Sports-Cheerleading-Buses	\$0	\$0	\$0	\$0	\$0	\$0
	Sports Transportation Total	\$127,000	\$0	\$127,000	\$75,639	\$6,361	\$45,000
	Transportation Total	\$6,152,707	\$0	\$6,152,707	\$4,023,552	\$2,111,007	\$18,148
<u>Communications</u>							
01422520-55903	Tech-Admin-Telephone Cell	\$32,000	\$0	\$32,000	\$22,995	\$10,431	(\$1,426)
01422520-55904	Tech-Admin-Telephone LAN	\$88,000	\$0	\$88,000	\$80,481	\$20,211	(\$12,692)
01422520-55907	Tech-Admin-WAN Communications	\$155,250	\$0	\$155,250	\$112,104	\$43,784	(\$638)
	Communications Total	\$275,250	\$0	\$275,250	\$215,580	\$74,426	(\$14,756)
<u>Postage</u>							
01902320-55900	Super-Admin-Postage	\$40,000	\$0	\$40,000	\$22,811	\$19,745	(\$2,555)
	Postage Total	\$40,000	\$0	\$40,000	\$22,811	\$19,745	(\$2,555)

**Trumbull Board of Education Expense vs Budget Detail
Report for the Period Ended 3/31/2022**

Account #	Account Description	Budget			Expended	Committed/ Estimates	Available/ (Over)
		Original	Transfers	Revised			
Advertising							
01912520-55903	Bus Off-Admin-Advertising	\$1,200	\$0	\$1,200	\$1,992	\$0	(\$792)
	Advertising Total	\$1,200	\$0	\$1,200	\$1,992	\$0	(\$792)
Interns							
01401000-55502	THS-Classroom-Interns	\$46,800	\$0	\$46,800	\$15,000	\$15,000	\$16,800
01401000-55503	TECEC-Classroom-Interns	\$0	\$0	\$0	\$0	\$0	\$0
01511001-55500	BHES-Classroom-Interns	\$31,200	\$0	\$31,200	\$15,300	\$15,300	\$600
01521001-55500	FTES-Classroom-Interns	\$31,200	\$0	\$31,200	\$15,300	\$15,300	\$600
01531001-55500	DFES-Classroom-Interns	\$31,200	\$0	\$31,200	\$15,300	\$15,300	\$600
01541001-55500	MBES-Classroom-Interns	\$31,200	\$0	\$31,200	\$15,300	\$15,300	\$600
01551001-55500	JRES-Classroom-Interns	\$31,200	\$0	\$31,200	\$7,650	\$7,650	\$15,900
01581001-55500	TES-Classroom-Interns	\$31,200	\$0	\$31,200	\$15,300	\$15,300	\$600
01611001-55500	HMS-Classroom-Interns	\$31,200	\$0	\$31,200	\$15,300	\$15,300	\$600
01621001-55500	MMS-Classroom-Interns	\$31,200	\$0	\$31,200	\$15,300	\$15,300	\$600
	Interns Total	\$296,400	\$0	\$296,400	\$129,750	\$129,750	\$36,900
Tuition							
01396110-55600	PPS-L/W-Tuition Outplaced	\$5,300,000	\$0	\$5,300,000	\$3,857,379	\$1,815,196	(\$372,575)
01396110-55601	PPS-EXCESS COST REFUND(ECR)	(\$1,000,000)	\$0	(\$1,000,000)	\$0	(\$1,000,000)	\$0
01402320-55600	Asst Super-Admin-Tuition	\$450,000	\$0	\$450,000	\$447,148	\$0	\$2,853
	Tuition Total	\$4,750,000	\$0	\$4,750,000	\$4,304,526	\$815,196	(\$369,722)
Printing							
01011000-55906	TECEC-Admin-Printing	\$200	\$0	\$200	\$225	\$0	(\$25)
01011200-55906	PPS-Admin-Printing	\$500	\$0	\$500	\$0	\$0	\$500
01402320-55906	Asst Super-Admin-Printing	\$1,500	\$0	\$1,500	\$1,207	\$0	\$293
01412210-55906	Curr Dir-Admin-Printing	\$0	\$0	\$0	\$0	\$0	\$0
01612400-55906	HMS-Classroom-Printing	\$0	\$0	\$0	\$0	\$0	\$0
01622400-55906	MMS-Classroom-Printing	\$0	\$0	\$0	\$0	\$0	\$0
01711006-55906	THS-Ag Science-Printing	\$1,500	\$0	\$1,500	\$950	\$0	\$550
01712400-55906	THS-Admin-Printing	\$9,000	\$0	\$9,000	\$4,849	\$0	\$4,151
01713202-55906	THS-Activities-Printing	\$750	\$0	\$750	\$13	\$0	\$737
01902320-55905	Super-Admin-Printing	\$1,500	\$0	\$1,500	\$0	\$0	\$1,500
	Printing Total	\$14,950	\$0	\$14,950	\$7,244	\$0	\$7,706
Other Purch'd Services							
01011000-55800	TECEC-Admin-Professional Devt	\$700	\$0	\$700	\$0	\$0	\$700
01011000-55900	TECEC-Admin-Other Purch'd Prop Svcs	\$500	\$0	\$500	\$210	\$0	\$290
01011200-55800	PPS-Admin-Professional Devt	\$30,000	\$0	\$30,000	\$7,353	\$0	\$22,647
01011200-55801	PPS-D/W-Mileage	\$15,000	\$0	\$15,000	\$3,816	\$0	\$11,185
01401203-55801	Asst Super-L/W-Mileage	\$20,000	\$0	\$20,000	\$3,574	\$0	\$16,426
01402320-55800	Asst Super-Admin-Professional Devt	\$20,000	\$0	\$20,000	\$1,702	\$500	\$17,798
01402320-55900	Asst Super-Other Purchased Services	\$0	\$0	\$0	\$0	\$1,480	(\$1,480)
01412210-55800	Curr Dir-Admin-Professional Devt	\$80,000	\$0	\$80,000	\$46,354	\$9,000	\$24,646
01412210-55802	Admin-Prof Devt Admin	\$0	\$0	\$0	(\$12)	\$0	\$12
01422520-55800	Tech-Admin-Professional Devt	\$2,850	\$0	\$2,850	\$50	\$0	\$2,800
01422520-55804	Tech-Admin-Mileage	\$4,200	\$0	\$4,200	\$903	\$0	\$3,297
01512400-55800	BHES-Admin-Professional Devt	\$500	\$0	\$500	\$0	\$0	\$500
01522400-55800	FTES-Admin-Professional Devt	\$500	\$0	\$500	\$0	\$0	\$500
01532400-55800	DFES-Admin-Professional Devt	\$500	\$0	\$500	\$0	\$0	\$500
01542400-55800	MBES-Admin-Professional Devt	\$500	\$0	\$500	\$0	\$0	\$500
01552400-55800	JRES-Admin-Professional Devt	\$500	\$0	\$500	\$0	\$0	\$500
01582400-55800	TES-Admin-Professional Devt	\$500	\$0	\$500	\$349	\$0	\$151
01612400-55800	HMS-Admin-Professional Devt	\$1,000	\$0	\$1,000	\$225	\$279	\$496
01622400-55800	MMS-Admin-Professional Devt	\$1,000	\$0	\$1,000	\$504	\$0	\$496
01711001-55800	THS-Classroom-Professional Devt	\$0	\$0	\$0	\$0	\$0	\$0
01711011-55800	THS-Foreign Lang-Professional Devt	\$0	\$0	\$0	\$0	\$0	\$0
01712400-55800	THS-Admin-Professional Devt	\$2,000	\$0	\$2,000	\$1,378	\$0	\$622
01712400-55901	THS-Admin-Other Purch'd Svcs	\$2,000	\$0	\$2,000	\$177	\$0	\$1,823
01741200-55800	Continuing Ed-Admin-Professional Devt	\$0	\$0	\$0	\$0	\$0	\$0
01741200-55900	Continuing Ed-Other Purch'd Svcs	\$40,000	\$0	\$40,000	\$40,000	\$0	\$0
01802130-55900	Super-Personnel-Other Purch'd Svcs	\$61,702	\$0	\$61,702	\$113,606	\$0	(\$51,904)
01802320-55800	Super-Personnel-Professional Devt	\$0	\$0	\$0	\$0	\$0	\$0
01822230-55800	Facilities-Admin-Professional Devt	\$2,500	\$0	\$2,500	\$466	\$196	\$1,838
01822230-55910	Facilities-Admin-Other Purch'd Svcs	\$20,900	\$0	\$20,900	\$13,769	\$1,320	\$5,811
01842610-55803	Facilities-Admin-Mileage	\$2,600	\$0	\$2,600	\$894	\$0	\$1,706
01852632-55910	Facilities-Inside Maint-Other Purch'd Svcs	\$1,500	\$0	\$1,500	\$0	\$0	\$1,500

**Trumbull Board of Education Expense vs Budget Detail
Report for the Period Ended 3/31/2022**

Account #	Account Description	Budget			Expended	Committed/ Estimates	Available/ (Over)
		Original	Transfers	Revised			
01882700-55800	Trans-Admin-Professional Devt	\$0	\$0	\$0	\$0	\$0	\$0
01902310-55800	Super-BOE-Professional Devt	\$1,400	\$0	\$1,400	\$0	\$0	\$1,400
01902320-55800	Super-Admin-Professional Devt	\$4,500	\$0	\$4,500	\$5,759	\$0	(\$1,259)
01912520-55800	Bus Off-Admin-Professional Devt	\$0	\$0	\$0	\$0	\$0	\$0
01922530-55804	Asst Super-Info Svcs-Oth Purch Svcs	\$6,000	\$0	\$6,000	\$1,235	\$0	\$4,765
	Other Purch'd Services Total	\$323,352	\$0	\$323,352	\$242,310	\$12,775	\$68,267
	Purchased Other Services Total	\$11,853,859	\$0	\$11,853,859	\$8,947,764	\$3,162,899	(\$256,805)
<u>Supplies</u>							
<u>Supplies Teaching</u>							
01011000-56111	TECEC-Classroom-Classroom Supplies	\$6,000	\$0	\$6,000	\$5,083	\$664	\$253
01011200-56111	PPS-Classroom-Classroom Supplies	\$30,000	\$0	\$30,000	\$6,225	\$278	\$23,497
01412214-56111	Curr Dir-D/W-Classroom Supplies	\$100,000	\$0	\$100,000	\$20,314	\$2,540	\$77,146
01511001-56111	BHES-Classroom Supplies	\$23,000	\$0	\$23,000	\$19,591	\$495	\$2,914
01512220-56901	BHES-Library-Supplies	\$2,568	\$0	\$2,568	\$3,697	\$0	(\$1,129)
01521001-56111	FTES-Classroom Supplies	\$29,000	\$0	\$29,000	\$25,561	\$295	\$3,144
01522220-56901	FTES-Library-Supplies	\$2,500	\$0	\$2,500	\$1,335	\$0	\$1,165
01531001-56111	DFES-Classroom Supplies	\$30,000	\$0	\$30,000	\$34,826	\$3,921	(\$8,746)
01532220-56901	DFES-Library-Supplies	\$2,500	\$0	\$2,500	\$218	\$0	\$2,282
01541001-56111	MBES-Classroom Supplies	\$28,000	\$0	\$28,000	\$24,294	\$245	\$3,461
01542220-56901	MBES-Library-Supplies	\$2,500	\$0	\$2,500	\$1,163	\$0	\$1,337
01551001-56111	JRES-Classroom Supplies	\$25,000	\$0	\$25,000	\$20,858	\$112	\$4,030
01552220-56901	JRES-Library-Supplies	\$2,500	\$0	\$2,500	\$1,449	\$983	\$68
01581001-56111	TES-Classroom Supplies	\$25,000	\$0	\$25,000	\$15,855	\$0	\$9,145
01582220-56901	TES-Library-Supplies	\$2,500	\$0	\$2,500	\$2,387	(\$0)	\$113
01611001-56111	HMS-Classroom-Classroom Supplies	\$32,059	\$0	\$32,059	\$29,439	\$976	\$1,644
01611016-56111	HMS-Music-Classroom Supplies	\$2,500	\$0	\$2,500	\$2,360	\$125	\$15
01611019-56111	HMS-PE/Health-Classroom Supplies	\$2,000	\$0	\$2,000	\$716	\$925	\$359
01612220-56111	HMS-Library-Supplies	\$1,900	\$0	\$1,900	\$1,585	\$313	\$3
01621001-56111	MMS-Classroom-Classroom Supplies	\$35,000	\$0	\$35,000	\$26,468	\$1,137	\$7,395
01621016-56111	MMS-Music-Classroom Supplies	\$2,500	\$0	\$2,500	\$0	\$272	\$2,228
01621019-56111	MMS-PE/Health-Classroom Supplies	\$2,000	\$0	\$2,000	\$1,776	\$155	\$69
01622220-56901	MMS-Library-Supplies	\$2,000	\$0	\$2,000	\$1,148	\$150	\$702
01711001-56111	THS-Classroom-Classroom Supplies	\$35,000	\$0	\$35,000	\$14,665	\$2,800	\$17,535
01711002-56112	THS-Art-Supplies	\$18,000	\$0	\$18,000	\$10,062	\$1,988	\$5,950
01711003-56112	THS-Business Ed-Supplies	\$1,100	\$0	\$1,100	\$1,173	(\$0)	(\$73)
01711006-56112	THS-Ag Science-Supplies	\$31,000	\$0	\$31,000	\$19,381	\$5,635	\$5,984
01711010-56112	THS-Language Arts-Supplies	\$2,005	\$0	\$2,005	\$1,385	\$0	\$620
01711011-56112	THS-Foreign Language-Supplies	\$1,750	\$0	\$1,750	\$536	\$0	\$1,214
01711013-56112	THS-Home Economics-Supplies	\$13,500	\$0	\$13,500	\$6,056	\$2,394	\$5,049
01711014-56112	THS-Industrial Arts-Supplies	\$14,000	\$0	\$14,000	\$11,385	\$245	\$2,370
01711015-56112	THS-Mathematics-Supplies	\$2,015	\$0	\$2,015	\$1,065	\$0	\$950
01711016-56112	THS-Music-Supplies	\$5,900	\$0	\$5,900	\$2,657	\$869	\$2,374
01711019-56112	THS-PE/Health-Supplies	\$3,000	\$0	\$3,000	\$2,205	\$0	\$795
01711022-56112	THS-Alternate School-Supplies	\$500	\$0	\$500	\$0	\$0	\$500
01711027-56112	THS-Science-Supplies	\$12,000	\$0	\$12,000	\$1,568	\$1,617	\$8,815
01711028-56112	THS-Social Studies-Supplies	\$830	\$0	\$830	\$220	\$0	\$610
01712120-56112	THS-Guidance-Supplies	\$600	\$0	\$600	\$0	\$0	\$600
01712220-56901	THS-Library-Supplies	\$3,000	\$0	\$3,000	\$1,085	\$0	\$1,915
01712221-56112	THS-Audio Visual-Supplies	\$0	\$0	\$0	\$0	\$0	\$0
01712400-56116	THS-Admin-Supplies	\$1,000	\$0	\$1,000	\$1,334	\$0	(\$334)
01713201-56112	Sports-Sports General-Supplies	\$65,000	\$0	\$65,000	\$36,985	\$20,520	\$7,494
01723301-56112	Sports-Baseball-Supplies	\$0	\$0	\$0	\$0	\$0	\$0
01723302-56112	Sports-Basketball-Supplies	\$0	\$0	\$0	\$0	\$0	\$0
01723303-56112	Sports-Field Hockey-Supplies	\$0	\$0	\$0	\$0	\$0	\$0
01723304-56112	Sports-Football-Supplies	\$0	\$0	\$0	\$0	\$0	\$0
01723305-56112	Sports-Ice Hockey-Supplies	\$0	\$0	\$0	\$0	\$0	\$0
01723306-56112	Sports-Lacrosse-Supplies	\$0	\$0	\$0	\$0	\$0	\$0
01723307-56112	Sports-Soccer-Supplies	\$0	\$0	\$0	\$0	\$0	\$0
01723309-56112	Sports-Tennis-Supplies	\$0	\$0	\$0	\$0	\$0	\$0
01723311-56112	Sports-Volleyball-Supplies	\$0	\$0	\$0	\$0	\$0	\$0
01723312-56112	Sports-Wrestling-Supplies	\$0	\$0	\$0	\$0	\$0	\$0
01723313-56112	Sports-Outdoor Track-Supplies	\$0	\$0	\$0	\$0	\$0	\$0
01723314-56112	Sports-Softball-Supplies	\$0	\$0	\$0	\$0	\$0	\$0
01723316-56112	Sports-Golf-Supplies	\$0	\$0	\$0	\$0	\$0	\$0
01723317-56112	Sports-Cross Country-Supplies	\$0	\$0	\$0	\$0	\$0	\$0
01723318-56112	Sports-Cheerleading-Supplies	\$0	\$0	\$0	\$0	\$0	\$0
	Sports Supplies Total	\$65,000	\$0	\$65,000	\$36,985	\$20,520	\$7,494
01741200-56110	Continuing Ed-Teaching Supplies	\$0	\$0	\$0	\$0	\$0	\$0

**Trumbull Board of Education Expense vs Budget Detail
Report for the Period Ended 3/31/2022**

Account #	Account Description	Budget			Expended	Committed/ Estimates	Available/ (Over)
		Original	Transfers	Revised			
	Supplies Teaching Total	\$601,227	\$0	\$601,227	\$358,111	\$49,656	\$193,460
<u>Supplies Office</u>							
01011000-56110	TECEC-Admin-Office Supplies	\$4,800	\$0	\$4,800	\$3,227	\$420	\$1,153
01011200-56110	PPS-Admin-Office Supplies	\$1,000	\$0	\$1,000	\$1,181	\$33	(\$214)
01052130-56110	PPS-Health Services-Supplies	\$6,500	\$0	\$6,500	\$3,002	\$6,750	(\$3,252)
01402320-56110	Asst Super-Admin-Office Supplies	\$4,000	\$0	\$4,000	\$6,958	\$1,062	(\$4,020)
01412210-56110	Curr Dir-Admin-Office Supplies	\$0	\$0	\$0	\$48	\$0	(\$48)
01422214-56900	Tech-L/W-Parts	\$12,500	\$0	\$12,500	\$12,028	\$50	\$422
01422520-56110	Tech-Admin-Office Supplies	\$1,250	\$0	\$1,250	\$1,803	\$49	(\$602)
01422520-56900	Tech-Admin-Parts	\$5,700	\$0	\$5,700	\$942	\$844	\$3,913
01512400-56110	BHES-Admin-Office Supplies	\$4,000	\$0	\$4,000	\$1,663	\$46	\$2,292
01522400-56110	FTES-Admin-Office Supplies	\$4,000	\$0	\$4,000	\$2,527	\$547	\$926
01532400-56110	DFES-Admin-Office Supplies	\$4,000	\$0	\$4,000	\$3,146	\$208	\$646
01542400-56110	MBES-Admin-Office Supplies	\$4,000	\$0	\$4,000	\$4,817	\$0	(\$817)
01552400-56110	JRES-Admin-Office Supplies	\$4,000	\$0	\$4,000	\$2,606	\$0	\$1,394
01582400-56110	TES-Admin-Office Supplies	\$4,000	\$0	\$4,000	\$2,091	\$0	\$1,909
01612400-56110	HMS-Admin-Office Supplies	\$7,000	\$0	\$7,000	\$2,667	\$115	\$4,218
01622400-56110	MMS-Admin-Office Supplies	\$8,000	\$0	\$8,000	\$3,017	\$325	\$4,658
01712221-56900	THS-Audio Visual-Parts & Maintenance	\$2,500	\$0	\$2,500	\$1,942	\$1,930	(\$1,372)
01712400-56110	THS-Admin-Office Supplies	\$4,000	\$0	\$4,000	\$3,867	\$0	\$133
01741200-56117	Continuing Ed-Office Supplies	\$0	\$0	\$0	\$0	\$0	\$0
01822230-56110	Facilities-Admin-Office Supplies	\$6,300	\$0	\$6,300	\$2,306	\$646	\$3,348
01882700-56110	Transportation-Office Supplies	\$0	\$0	\$0	\$746	\$0	(\$746)
01902320-56110	Super-Admin-Office Supplies	\$5,000	\$0	\$5,000	\$5,631	\$2,055	(\$2,686)
01912520-56110	Bus Off-Admin-Office Supplies	\$9,000	\$0	\$9,000	\$6,943	\$2,490	(\$433)
	Supplies Office Total	\$101,550	\$0	\$101,550	\$73,158	\$17,571	\$10,821
<u>Supplies Custodial</u>							
01842610-56130	Facilities-Custodial-Supplies	\$175,000	\$0	\$175,000	\$158,472	\$50,391	(\$33,864)
	Supplies Custodial Total	\$175,000	\$0	\$175,000	\$158,472	\$50,391	(\$33,864)
<u>Supplies Maintenance</u>							
01852622-56134	Facilities-Snow Removal-Supplies	\$9,000	\$0	\$9,000	\$10,975	\$0	(\$1,975)
01852623-56133	Facilities-Vehicles-Gas/Diesel	\$32,000	\$0	\$32,000	\$29,553	\$715	\$1,731
01852623-56134	Facilities-Vehicles-Supplies	\$15,000	\$0	\$15,000	\$14,831	\$4,687	(\$4,518)
01852625-56134	Facilities-Grounds-Supplies	\$35,000	\$0	\$35,000	\$10,915	(\$0)	\$24,085
01852627-56134	Facilities-Lawn Care-Supplies	\$0	\$0	\$0	\$8,062	\$2,811	(\$10,873)
01852628-56134	Facilities-Paving-Supplies	\$0	\$0	\$0	\$895	\$0	(\$895)
01852631-56134	Facilities-Maintenance-Supplies	\$2,000	\$0	\$2,000	\$3,217	\$1,319	(\$2,536)
01852632-56134	Facilities-Inside Maintenance-Supplies	\$30,000	\$0	\$30,000	\$7,519	\$4,692	\$17,789
01852633-56134	Facilities-Electrical-Supplies	\$55,000	\$0	\$55,000	\$15,993	\$4,690	\$34,317
01852634-56134	Facilities-Fire Prot-Supplies	\$0	\$0	\$0	\$1,293	\$95	(\$1,388)
01852635-56134	Facilities-Floor Repair-Supplies	\$0	\$0	\$0	\$864	\$720	(\$1,584)
01852637-56134	Facilities-Glass-Supplies	\$0	\$0	\$0	\$1,666	\$0	(\$1,666)
01852638-56134	Facilities-Hardware-Supplies	\$0	\$0	\$0	\$3,183	\$349	(\$3,532)
01852639-56134	Facilities-HVAC-Supplies	\$55,000	\$0	\$55,000	\$28,990	\$8,001	\$18,009
01852641-56134	Facilities-Masonry-Supplies	\$0	\$0	\$0	\$254	\$0	(\$254)
01852642-56134	Facilities-Painting-Supplies	\$0	\$0	\$0	\$1,104	\$1,713	(\$2,818)
01852643-56134	Facilities-Plant Equip-Supplies	\$0	\$0	\$0	\$231	\$0	(\$231)
01852644-56134	Facilities-Plumbing-Supplies	\$36,000	\$0	\$36,000	\$16,412	\$10,066	\$9,522
01852645-56134	Facilities-Roofing-Supplies	\$5,000	\$0	\$5,000	\$0	\$0	\$5,000
01852646-56134	Facilities-Pest Control-Supplies	\$0	\$0	\$0	\$64	\$0	(\$64)
01852648-56134	Facilities-Indoor Air Quality-IAQ-Supplies	\$10,000	\$0	\$10,000	\$7,475	\$3,005	(\$480)
01852649-56134	Facilities-Welding-Supplies	\$0	\$0	\$0	\$460	\$147	(\$608)
	Supplies Maintenance Total	\$284,000	\$0	\$284,000	\$163,957	\$43,012	\$77,031
<u>Text & Workbooks</u>							
01011000-56411	TECEC-Classroom-Text & Workbooks	\$1,000	\$0	\$1,000	\$693	\$0	\$307
01011200-56411	PPS-Admin-Text & Workbooks	\$4,300	\$0	\$4,300	\$190	\$0	\$4,110
01412210-56411	Curr Dir-D/W-Text & Workbooks	\$130,000	\$0	\$130,000	\$34,662	(\$0)	\$95,338
01511001-56411	BHES-Classroom-Text & Workbooks	\$29,000	\$0	\$29,000	\$30,058	\$685	(\$1,743)
01521001-56411	FTES-Classroom-Text & Workbooks	\$29,000	\$0	\$29,000	\$11,544	\$1,884	\$15,572
01531001-56411	DFES-Classroom-Text & Workbooks	\$29,000	\$0	\$29,000	\$14,478	\$869	\$13,652
01541001-56411	MBES-Classroom-Text & Workbooks	\$29,000	\$0	\$29,000	\$18,847	\$128	\$10,026
01551001-56411	JRES-Classroom-Text & Workbooks	\$26,000	\$0	\$26,000	\$11,772	\$2,864	\$11,363
01581001-56411	TES-Classroom-Text & Workbooks	\$29,000	\$0	\$29,000	\$12,364	\$0	\$16,636
01611001-56411	HMS-Classroom-Text & Workbooks	\$13,000	\$0	\$13,000	\$3,010	\$0	\$9,990
01621001-56411	MMS-Classroom-Text & Workbooks	\$13,000	\$0	\$13,000	\$3,305	\$2,326	\$7,369

**Trumbull Board of Education Expense vs Budget Detail
Report for the Period Ended 3/31/2022**

Account #	Account Description	Budget			Expended	Committed/ Estimates	Available/ (Over)
		Original	Transfers	Revised			
01621016-56411	MMS-Music-Text & Workbooks	\$0	\$0	\$0	\$0	\$0	\$0
01711003-56411	THS-Business Ed-Text & Workbooks	\$8,000	\$0	\$8,000	\$7,385	\$0	\$615
01711006-56411	THS-Ag Science-Text & Workbooks	\$4,000	\$0	\$4,000	\$116	\$0	\$3,884
01711010-56411	THS-Language Arts-Text & Workbooks	\$18,000	\$0	\$18,000	\$4,939	\$5,835	\$7,226
01711011-56411	THS-Foreign Language-Text & Workbooks	\$11,516	\$0	\$11,516	\$10,461	(\$0)	\$1,055
01711013-56411	THS-Home Economics-Text & Workbooks	\$3,800	\$0	\$3,800	\$0	\$0	\$3,800
01711015-56411	THS-Mathematics-Text & Workbooks	\$9,000	\$0	\$9,000	\$4,680	\$0	\$4,320
01711019-56411	THS-PE/Health-Text & Workbooks	\$500	\$0	\$500	\$0	\$0	\$500
01711022-56411	THS-Alternate School-Text & Workbooks	\$0	\$0	\$0	\$0	\$0	\$0
01711027-56411	THS-Science-Text & Workbooks	\$9,800	\$0	\$9,800	\$2,082	\$0	\$7,718
01711028-56411	THS-Social Studies-Text & Workbooks	\$10,350	\$0	\$10,350	\$8,443	(\$0)	\$1,907
01741200-56411	Continuing Ed-Textbooks	\$0	\$0	\$0	\$0	\$0	\$0
	Text & Workbooks Total	\$407,266	\$0	\$407,266	\$179,028	\$14,591	\$213,646
<u>Subscriptions</u>							
01011200-56425	PPS-Admin-Periodicals	\$1,000	\$0	\$1,000	\$469	\$239	\$292
01412210-56425	Curr Dir-Admin-Periodicals	\$300	\$0	\$300	\$0	\$0	\$300
01412214-56426	Cur Dir-D/W-Online Subscriptions	\$300,000	\$0	\$300,000	\$272,682	\$0	\$27,318
01422520-56425	Tech-Admin-Periodicals	\$200	\$0	\$200	\$86	\$0	\$114
01512220-56425	BHES-Library-Periodicals	\$1,245	\$0	\$1,245	\$2,343	\$0	(\$1,098)
01522220-56425	FTES-Library-Periodicals	\$1,200	\$0	\$1,200	\$1,200	\$0	\$0
01532220-56425	DFES-Library-Periodicals	\$1,250	\$0	\$1,250	\$0	\$0	\$1,250
01542220-56425	MBES-Library-Periodicals	\$1,200	\$0	\$1,200	\$0	\$0	\$1,200
01552220-56425	JRES-Library-Periodicals	\$1,250	\$0	\$1,250	\$1,245	\$0	\$5
01582220-56425	TES-Library-Periodicals	\$1,250	\$0	\$1,250	\$1,175	\$0	\$75
01612220-56425	HMS-Library-Periodicals	\$2,000	\$0	\$2,000	\$1,687	(\$0)	\$313
01622220-56425	MMS-Library-Periodicals	\$1,500	\$0	\$1,500	\$893	\$212	\$395
01712220-56425	THS-Library-Periodicals	\$2,100	\$0	\$2,100	\$1,127	\$443	\$530
01712400-56425	THS-Admin-Periodicals	\$0	\$0	\$0	\$0	\$0	\$0
01822230-56425	Facilities-Admin-Periodicals	\$350	\$0	\$350	\$0	\$0	\$350
01882700-56425	Trans-Admin-Periodicals	\$0	\$0	\$0	\$0	\$0	\$0
01902310-56425	Super-BOE-Periodicals	\$0	\$0	\$0	\$0	\$0	\$0
01902320-56425	Super- Admin-Periodicals	\$700	\$0	\$700	\$484	\$0	\$216
	Subscriptions Total	\$315,545	\$0	\$315,545	\$283,391	\$895	\$31,260
<u>Testing Materials</u>							
01011000-56904	TECEC-Classroom-Testing Materials	\$2,000	\$0	\$2,000	\$1,229	\$0	\$771
01011200-56904	PPS-L/W-Testing Materials	\$37,000	\$0	\$37,000	\$3,023	(\$160)	\$34,137
01412210-56904	Curr Dir-D/W-Testing Materials	\$95,000	\$0	\$95,000	\$84,580	\$3,800	\$6,620
01712120-56903	THS-Guidance-Testing Materials	\$600	\$0	\$600	\$400	\$0	\$200
	Testing Materials Total	\$134,600	\$0	\$134,600	\$89,232	\$3,641	\$41,728
<u>Books & A/V</u>							
01512220-56420	BHES-Library-Books & Media	\$8,000	\$0	\$8,000	\$7,585	\$67	\$348
01522220-56420	FTES-Library-Books & Media	\$5,000	\$0	\$5,000	\$438	\$0	\$4,562
01532220-56420	DFES-Library-Books & Media	\$5,000	\$0	\$5,000	\$4,128	\$1,139	(\$267)
01542220-56420	MBES-Library-Books & Media	\$5,000	\$0	\$5,000	\$2,584	\$0	\$2,416
01552220-56420	JRES-Library-Books & Media	\$5,000	\$0	\$5,000	\$2,569	\$2,419	\$13
01582220-56420	TES-Library-Books & Media	\$5,000	\$0	\$5,000	\$2,706	\$1,986	\$308
01612220-56420	HMS-Library-Books & Media	\$2,000	\$0	\$2,000	\$1,777	\$0	\$223
01622220-56420	MMS-Library-Books & Media	\$2,000	\$0	\$2,000	\$494	\$765	\$740
01712220-56420	THS-Library-Books & Media	\$7,040	\$0	\$7,040	\$2,697	\$3,035	\$1,308
	Books & A/V Total	\$44,040	\$0	\$44,040	\$24,978	\$9,411	\$9,651
<u>Software</u>							
01412210-56118	Curr Dir-D/W Software	\$5,000	\$0	\$5,000	\$4,583	\$0	\$418
01422214-56118	Tech-L/W-Software	\$114,000	\$0	\$114,000	\$130,115	\$523	(\$16,638)
01712120-56118	THS-Guidance-Software	\$0	\$0	\$0	\$0	\$0	\$0
	Software Total	\$119,000	\$0	\$119,000	\$134,698	\$523	(\$16,221)
<u>Energy</u>							
01842611-56201	Facilities-D/W-Heating Oil	\$0	\$0	\$0	\$0	\$0	\$0
01842611-56202	Facilities-D/W-Natural Gas	\$435,000	\$0	\$435,000	\$409,827	\$25,173	\$0
	Energy Total	\$435,000	\$0	\$435,000	\$409,827	\$25,173	\$0
<u>Other Supplies</u>							
01422214-56117	Tech-L/W-Computer Supplies	\$850	\$0	\$850	(\$128)	\$1,843	(\$865)
01422220-56117	Tech-Dist AV/Chan 17-Supplies	\$350	\$0	\$350	\$0	\$0	\$350
01422220-56900	Tech-Dist AV/Ch17-Parts	\$6,500	\$0	\$6,500	\$4,969	\$0	\$1,531

**Trumbull Board of Education Expense vs Budget Detail
Report for the Period Ended 3/31/2022**

Account #	Account Description	Budget			Expended	Committed/ Estimates	Available/ (Over)
		Original	Transfers	Revised			
01613202-56119	HMS-Activities-Supplies	\$2,500	\$0	\$2,500	\$0	\$0	\$2,500
01623202-56119	MMS-Activities-Supplies	\$2,500	\$0	\$2,500	\$0	\$0	\$2,500
01712400-56270	THS-Admin-Security Supplies	\$1,250	\$0	\$1,250	\$566	\$0	\$684
01712400-56907	THS-Admin-Graduation	\$15,000	\$0	\$15,000	\$4,459	\$11,016	(\$475)
01713203-56906	THS-Activities-Fees, Awards & Supplies	\$2,700	\$0	\$2,700	\$145	\$0	\$2,555
01852625-56900	Fences/Playground-Supplies	\$0	\$0	\$0	\$1,839	\$0	(\$1,839)
01852636-56900	Furniture Repairs-Supplies	\$0	\$0	\$0	\$2,830	\$0	(\$2,830)
01882700-56270	Transportation-Bus Supplies	\$0	\$0	\$0	\$0	\$0	\$0
	Other Supplies Total	\$31,650	\$0	\$31,650	\$14,681	\$12,859	\$4,110
	Supplies Total	\$2,648,878	\$0	\$2,648,878	\$1,889,533	\$227,722	\$531,623
Property							
Office Equipment							
01612400-57301	HMS-Admin-Equipment	\$500	\$0	\$500	\$0	\$0	\$500
01622400-57301	MMS-Admin-Equipment	\$0	\$0	\$0	\$0	\$0	\$0
01822230-57301	Facilities-Admin-Equipment	\$350	\$0	\$350	\$0	\$0	\$350
	Office Equipment Total	\$850	\$0	\$850	\$0	\$0	\$850
Office Furniture							
01052130-57304	SPED-Health Services Furniture	\$0	\$0	\$0	\$0	\$0	\$0
01402320-57308	Asst. Super.-Furniture	\$0	\$0	\$0	\$810	\$0	(\$810)
01712400-57308	THS-Admin-Office Furniture	\$0	\$0	\$0	\$0	\$0	\$0
01822230-57308	Facilities-Admin-Furniture	\$0	\$0	\$0	\$810	\$0	(\$810)
01852651-57301	Facilities-Building Improvement-Furniture	\$1,200	\$0	\$1,200	\$0	\$0	\$1,200
01902520-57308	Bus Off-Admin-Office Furniture	\$0	\$0	\$0	\$0	\$0	\$0
	Office Furniture Total	\$1,200	\$0	\$1,200	\$1,620	\$0	(\$420)
Classroom Equipment							
01011000-57301	TECEC-Classroom-Instructional Equipment	\$3,000	\$0	\$3,000	\$2,006	\$324	\$670
01032130-57303	PPS-L/W-Equipment Instructional	\$11,000	\$0	\$11,000	\$11,813	\$4,954	(\$5,767)
01412210-57301	Curr Dir-D/W-Equipment Instructional	\$10,000	\$0	\$10,000	\$0	\$0	\$10,000
01421001-57310	Tech-Classroom-Computer Equipment	\$233,500	\$0	\$233,500	\$217,552	\$0	\$15,948
01422214-57301	Tech-L/W-Computer Equipment	\$11,500	\$0	\$11,500	\$5,888	\$0	\$5,612
01422220-57301	Tech-Dist AV/Ch17-Equipment Instructional	\$28,500	\$0	\$28,500	\$29,023	\$0	(\$523)
01511001-57301	BHES-Classroom-Equipment Instructional	\$2,479	\$0	\$2,479	\$100	(\$0)	\$2,379
01512220-57302	BHES-Library-Equipment Instructional	\$2,214	\$0	\$2,214	\$149	\$0	\$2,065
01521001-57301	FTES-Classroom-Equipment Instructional	\$2,400	\$0	\$2,400	\$1,644	\$0	\$756
01522220-57302	FTES-Library-Equipment Instructional	\$2,300	\$0	\$2,300	\$257	\$0	\$2,043
01531001-57301	DFES-Classroom-Equipment Instructional	\$400	\$0	\$400	\$249	\$0	\$151
01532220-57302	DFES-Library-Equipment Instructional	\$2,400	\$0	\$2,400	\$70	\$0	\$2,330
01541001-57301	MBES-Classroom-Equipment Instructional	\$1,000	\$0	\$1,000	\$0	\$0	\$1,000
01542220-57302	MBES-Library-Equipment Instructional	\$2,200	\$0	\$2,200	\$3,236	\$0	(\$1,036)
01551001-57301	JRES-Classroom-Equipment Instructional	\$2,500	\$0	\$2,500	\$0	\$981	\$1,519
01552220-57302	JRES-Library-Equipment Instructional	\$2,200	\$0	\$2,200	\$1,490	\$398	\$312
01581001-57301	TES-Classroom-Equipment Instructional	\$2,500	\$0	\$2,500	\$218	\$0	\$2,282
01582220-57302	TES-Library-Equipment Instructional	\$2,200	\$0	\$2,200	\$0	\$0	\$2,200
01611001-57301	HMS-Classroom-Equipment Instructional	\$3,400	\$0	\$3,400	\$2,200	\$800	\$400
01611016-57301	HMS-Music-Equipment Instructional	\$3,300	\$0	\$3,300	\$3,048	\$0	\$252
01612220-57302	HMS-Library-Equipment Instructional	\$1,700	\$0	\$1,700	\$574	\$1,012	\$114
01621001-57301	MMS-Classroom-Equipment Instructional	\$3,400	\$0	\$3,400	\$398	\$302	\$2,701
01621016-57301	MMS-Music-Equipment Instructional	\$3,300	\$0	\$3,300	\$0	\$0	\$3,300
01622220-57302	MMS-Library-Equipment Instructional	\$1,700	\$0	\$1,700	\$654	\$0	\$1,046
01711001-57301	THS-Classroom-Equipment	\$0	\$0	\$0	\$0	\$0	\$0
01711002-57301	THS-Art-Equipment Instructional	\$2,000	\$0	\$2,000	\$3,891	\$0	(\$1,891)
01711003-57301	THS-Business Ed-Equipment Instructional	\$0	\$0	\$0	\$0	\$0	\$0
01711006-57301	THS-Ag Science-Equipment Instructional	\$969	\$0	\$969	\$0	\$0	\$969
01711011-57301	THS-Foreign Language-Equipment Instructional	\$6,200	\$0	\$6,200	\$6,174	\$0	\$26
01711013-57301	THS-Home Economics-Equipment Instructional	\$2,500	\$0	\$2,500	\$2,873	\$284	(\$657)
01711014-57301	THS-Industrial Arts-Equipment Instructional	\$800	\$0	\$800	\$518	\$900	(\$618)
01711016-57301	THS-Music-Equipment Instructional	\$1,794	\$0	\$1,794	\$1,123	\$0	\$671
01711019-57301	THS-PE/Health-Equipment Instructional	\$2,500	\$0	\$2,500	\$429	\$10	\$2,061
01711027-57301	THS-Science-Equipment Instructional	\$8,500	\$0	\$8,500	\$1,907	\$0	\$6,593
01712220-57302	THS-Library-Equipment Instructional	\$775	\$0	\$775	\$0	\$780	(\$5)
01712221-57301	THS-Audio Visual-Equipment Instructional	\$4,000	\$0	\$4,000	\$0	\$0	\$4,000
01712400-57301	THS-Admin-Equipment	\$0	\$0	\$0	\$0	\$0	\$0
01713201-57301	Sports-Sports General-Equipment Instructional	\$40,000	\$0	\$40,000	\$2,734	\$4,705	\$32,561
01723307-57301	Sports-Soccer-Equipment	\$0	\$0	\$0	\$0	\$0	\$0
01723308-57301	Sports-Swimming-Equipment	\$0	\$0	\$0	\$0	\$0	\$0
01723309-57301	Sports-Tennis-Equipment	\$0	\$0	\$0	\$0	\$0	\$0

**Trumbull Board of Education Expense vs Budget Detail
Report for the Period Ended 3/31/2022**

Account #	Account Description	Budget			Expended	Committed/ Estimates	Available/ (Over)
		Original	Transfers	Revised			
01723311-57301	Sports-Volleyball-Equipment	\$0	\$0	\$0	\$0	\$0	\$0
01723313-57301	Sports-Outdoor Track-Equipment	\$0	\$0	\$0	\$0	\$0	\$0
01723315-57301	Sports-Gymnastics-Equipment	\$0	\$0	\$0	\$0	\$0	\$0
	Classroom Equipment Total	\$409,131	\$0	\$409,131	\$300,219	\$15,450	\$93,462
<u>Classroom Furniture</u>							
01511001-57308	BHES-Classroom-Furniture	\$1,000	\$0	\$1,000	\$751	\$0	\$249
01521001-57308	FTES-Classroom-Furniture	\$2,000	\$0	\$2,000	\$170	\$0	\$1,830
01531001-57308	DFES-Classroom-Furniture	\$2,000	\$0	\$2,000	\$4,468	(\$0)	(\$2,468)
01541001-57308	MBES-Classroom-Furniture	\$2,000	\$0	\$2,000	\$872	\$0	\$1,128
01551001-57308	JRES-Classroom-Furniture	\$2,000	\$0	\$2,000	\$1,670	\$0	\$330
01581001-57308	TES-Classroom-Furniture	\$2,000	\$0	\$2,000	\$650	\$0	\$1,350
01611001-57308	HMS-Classroom-Furniture	\$500	\$0	\$500	\$0	\$0	\$500
01621001-57308	MMS-Classroom-Furniture	\$0	\$0	\$0	\$0	\$0	\$0
	Classroom Furniture Total	\$11,500	\$0	\$11,500	\$8,581	(\$0)	\$2,919
<u>Building Equipment</u>							
01842610-57301	Facilities-Custodial-Equipment	\$5,000	\$0	\$5,000	\$1,560	\$0	\$3,440
01852622-57307	Facilities-Snow Removal-Equipment	\$5,000	\$0	\$5,000	\$4,581	\$0	\$419
01852623-57307	Facilities-Vehicles-Equipment	\$1,000	\$0	\$1,000	\$2,331	\$1,369	(\$2,700)
01852625-57307	Facilities-Grounds-Equipment	\$17,000	\$0	\$17,000	\$0	\$0	\$17,000
01852627-57307	Facilities-Lawn Care-Equipment	\$0	\$0	\$0	\$36,997	\$0	(\$36,997)
01852632-57307	Facilities-Inside Maintenance-Equipment	\$1,000	\$0	\$1,000	\$0	\$0	\$1,000
01852633-57306	FacilitiesPlantBldg-Electrical-Equipment	\$0	\$0	\$0	\$20,325	\$5,154	(\$25,479)
01852633-57307	Facilities-Electrical-Equipment	\$2,500	\$0	\$2,500	\$380	\$0	\$2,120
01852639-57307	Facilities-HVAC-Equipment	\$25,992	\$0	\$25,992	\$48,842	\$0	(\$22,850)
01852643-57307	Facilities-Plant-Equipment	\$0	\$0	\$0	\$450	\$0	(\$450)
01852644-57307	Facilities-Plumbing-Equipment	\$1,000	\$0	\$1,000	\$1,062	\$87,360	(\$87,422)
01852648-57307	Facilities-IAQ-Equipment	\$10,000	\$0	\$10,000	\$0	\$0	\$10,000
01852654-57340	Facilities-Maintenance-Vehicle	\$80,000	\$0	\$80,000	\$68,385	\$0	\$11,615
	Building Equipment Total	\$148,492	\$0	\$148,492	\$184,913	\$93,882	(\$130,304)
<u>Building Improvements</u>							
01842611-57202	Facilities-Project Improvements to Site	\$128,489	\$0	\$128,489	\$0	\$0	\$128,489
01852650-57200	Facilities-Site-Building Improvement	\$0	\$0	\$0	\$8,540	\$12,170	(\$20,710)
01852650-57202	Facilities-Site-Building Improvement	\$0	\$0	\$0	\$0	\$0	\$0
01852651-57202	Facilities-Building Improvement-Projects	\$30,000	\$0	\$30,000	\$85,676	\$12,320	(\$67,996)
	Building Improvements Total	\$158,489	\$0	\$158,489	\$94,216	\$24,490	\$39,784
<u>Other Equipment</u>							
01422520-57301	Tech-Admin-WAN Equipment	\$3,500	\$0	\$3,500	\$676	\$0	\$2,824
	Other Equipment Total	\$3,500	\$0	\$3,500	\$676	\$0	\$2,824
	Property Total	\$733,162	\$0	\$733,162	\$590,225	\$133,822	\$9,115
<u>Miscellaneous</u>							
<u>Debt Service, Dues, Fees and Memberships</u>							
01011000-58900	TECEC-Admin-Dues & Fees	\$700	\$0	\$700	\$186	\$320	\$194
01011200-58900	PPS-Admin-Dues & Fees	\$2,000	\$0	\$2,000	\$1,876	\$1,701	(\$1,577)
01402210-58900	Instructional-Dues & Fees	\$0	\$0	\$0	\$0	\$0	\$0
01402320-58900	Asst Super-Admin-Dues & Fees	\$7,000	\$0	\$7,000	\$5,599	\$0	\$1,401
01412210-58900	Curr Dir-Admin-Dues & Fees	\$0	\$0	\$0	\$250	\$0	(\$250)
01422520-58900	Tech-Admin-Dues & Fees	\$100	\$0	\$100	\$0	\$0	\$100
01512400-58900	BHES-Admin-Dues & Fees	\$553	\$0	\$553	\$350	\$0	\$203
01522400-58900	FTES-Admin-Dues & Fees	\$553	\$0	\$553	\$318	\$0	\$235
01532400-58900	DFES-Admin-Dues & Fees	\$248	\$0	\$248	\$0	\$0	\$248
01542400-58900	MBES-Admin-Dues & Fees	\$250	\$0	\$250	\$0	\$0	\$250
01552400-58900	JRES-Admin-Dues & Fees	\$250	\$0	\$250	\$0	\$0	\$250
01582400-58900	TES-Admin-Dues & Fees	\$550	\$0	\$550	\$361	\$0	\$189
01612400-58900	HMS-Admin-Dues & Fees	\$900	\$0	\$900	\$1,060	\$0	(\$160)
01622400-58900	MMS-Admin-Dues & Fees	\$900	\$0	\$900	\$764	\$0	\$136
01711006-58900	THS-Ag Science-Dues & Fees	\$899	\$0	\$899	\$350	\$0	\$549
01711019-58900	THS-PE/Health-Dues & Fees	\$0	\$0	\$0	\$0	\$0	\$0
01712120-58900	THS-Guidance-Dues & Fees	\$0	\$0	\$0	\$25	\$0	(\$25)
01712220-58900	THS-Library-Dues & Fees	\$0	\$0	\$0	\$0	\$0	\$0
01712400-58900	THS-Admin-Dues & Fees	\$11,225	\$0	\$11,225	\$10,694	\$157	\$374
01713201-58900	Sports-Sports General-Dues & Fees	\$35,000	\$0	\$35,000	\$30,514	\$3,725	\$761
01741200-58900	Cont Ed-Admin-Dues & Fees	\$0	\$0	\$0	\$0	\$0	\$0

**Trumbull Board of Education Expense vs Budget Detail
Report for the Period Ended 3/31/2022**

<u>Account #</u>	<u>Account Description</u>	<u>Budget</u>			<u>Expended</u>	<u>Committed/ Estimates</u>	<u>Available/ (Over)</u>
		<u>Original</u>	<u>Transfers</u>	<u>Revised</u>			
01822230-58900	Facilities-Admin-Dues & Fees	\$1,500	\$0	\$1,500	\$1,200	\$0	\$300
01882700-58900	Trans-Admin-Dues & Fees	\$375	\$0	\$375	\$127	\$0	\$248
01902320-58900	Super-Admin-Dues & Fees	\$13,000	\$0	\$13,000	\$19,551	\$2,400	(\$8,951)
01912520-58310	Redemption of Principal on Loans	\$673,494	\$0	\$673,494	\$509,239	\$163,963	\$292
01912520-58320	Interest on Loans	\$120,124	\$0	\$120,124	\$72,608	\$47,807	(\$291)
01912520-58900	Bus Off-Admin-Dues & Fees	\$7,000	\$0	\$7,000	\$15,269	\$0	(\$8,269)
	Dues, Fees and Memberships Total	\$876,621	\$0	\$876,621	\$670,342	\$220,073	(\$13,794)
 <u>Other Miscellaneous</u>							
01912520-58904	D/W-Admin-Bad Debt Expense	\$1,000	\$0	\$1,000	\$0	\$0	\$1,000
	Other Miscellaneous Total	\$1,000	\$0	\$1,000	\$0	\$0	\$1,000
	Miscellaneous Total	\$877,621	\$0	\$877,621	\$670,342	\$220,073	(\$12,794)
 <u>Other Objects</u>							
01412210-59000	Curr-District Wide Support	\$0	\$0	\$0	\$0	\$0	\$0
01912520-59000	Bus Office-Admin-Anticipated Surplus	\$0	\$0	\$0	\$0	\$0	\$0
01912520-59001	Bus Office-Excess Cost Reim	\$0	\$0	\$0	\$0	\$0	\$0
	Other Objects Total	\$0	\$0	\$0	\$0	\$0	\$0
	Munis Report Total	\$112,296,658	\$0	\$112,296,658	\$74,372,018	\$36,508,183	\$1,416,457

**Trumbull Board of Education COVID Expense
Report for the Period Ended 3/31/2022**

<u>Account #</u>	<u>Account Description</u>	<u>Actual</u>	<u>Committed/ Expended</u>	<u>Available/ Estimates</u>
<u>COVID Expenses reflected in Munis expended</u>				
01011200-53230 -COVID	CONSULTANT	\$0	\$0	\$0
01011200-56111 -COVID	SUPPLIES - GENERAL CLASSROOM	\$0	\$0	\$0
01052130-56110 -COVID	SUPPLIES	\$0	\$0	\$0
01331200-51110 -COVID	TEACHERS-CLASSROOM	\$0	\$0	\$0
01401203-51117 -COVID	SUBSTITUTE TEACHERS,TUTORS	\$0	\$0	\$0
01402320-51114 -COVID	DIRECTOR	\$0	\$0	\$0
01421001-57310 -COVID	EQUIPMENT-COMPUTER	\$0	\$0	\$0
01422214-56900 -COVID	PARTS, MAINTENANCE	\$0	\$0	\$0
01422214-57301 -COVID	EQUIPMENT-COMPUTER	\$0	\$0	\$0
01422520-51141 -COVID	CUST./MAINT. - OT - SCHOOL	\$0	\$0	\$0
01422520-56110 -COVID	SUPPLIES	\$0	\$0	\$0
01422520-56900 -COVID	PARTS, MAINTENANCE	\$0	\$0	\$0
01521001-57308 -COVID	FURNITURE	\$0	\$0	\$0
01541001-56111 -COVID	SUPPLIES - GENERAL CLASSROOM	\$0	\$0	\$0
01541001-57308 -COVID	FURNITURE	\$0	\$0	\$0
01551001-57308 -COVID	FURNITURE	\$0	\$0	\$0
01581001-57308 -COVID	FURNITURE	\$0	\$0	\$0
01611016-56111 -COVID	SUPPLIES - GENERAL CLASSROOM	\$0	\$0	\$0
01612400-56110 -COVID	SUPPLIES	\$0	\$0	\$0
01712400-56110 -COVID	SUPPLIES	\$0	\$0	\$0
01712400-57308 -COVID	FURNITURE	\$0	\$0	\$0
01713201-56112 -COVID	SUPPLIES	\$0	\$0	\$0
01802320-51117 -COVID	SUBSTITUTE TEACHERS,TUTORS	\$0	\$0	\$0
01802320-51129 -COVID	OTHER NON-CERTIFIED	\$0	\$0	\$0
01802320-51139 -COVID	SUBSTITUTE TEACHERS,TUTORS	\$0	\$0	\$0
01842610-51140 -COVID	CUST./MAINT. - OT - SCHOOL	\$0	\$0	\$0
01842610-51141 -COVID	CUST./MAINT. - OT - SCHOOL	\$0	\$0	\$0
01842610-51149 -COVID	CUST./MAINT. - OT - SCHOOL	\$0	\$0	\$0
01842610-56130 -COVID	SUPPLIES - CUSTODIAL	\$10,057	\$1,082	(\$11,139)
01852620-51141 -COVID	CUST./MAINT. - OT - SCHOOL	\$0	\$0	\$0
01852631-54300 -COVID	REPAIRS, SERVICE FEES	\$0	\$0	\$0
01852639-56134 -COVID	PARTS AND SUPPLIES-MAINTENANCE	\$0	\$0	\$0
01852639-57307 -COVID	EQUIPMENT	\$10,042	\$0	(\$10,042)
01852644-56134 -COVID	PARTS AND SUPPLIES-MAINTENANCE	\$0	\$0	\$0
<u>COVID Total</u>		20,099	\$1,082	(\$21,181)
<u>Report Total less COVID</u>	\$112,296,658	\$0	\$112,296,658	\$74,351,919
<u>Munis Report Total</u>	\$112,296,658	\$0	\$112,296,658	\$74,372,018
			\$36,507,101	\$1,437,638
			\$36,508,183	\$1,416,457

	Trumbull Board of Education				
	Town 009 Accounts				
	7/1/21 to 3/31/22				
Org#	Description	Budget	Expenditures	Encumbrances	Balance
09002611	Electricity	24,000	18,000	-	6,000
09005000	Community Services-Custodian Reg Pay	1,000	-	-	1,000
09005000	Community Services-Custodian OT Pay	80,688	37,243	-	43,445
09005000	Community Services-Custodian OT Pay-COVID	20,500	-	-	20,500
09006001	Non Public Schools - Teachers	100,291	62,194	45,609	(7,511)
09006200	Community Services - HC Pool Employee	59,400	39,950	17,070	2,380
09006200	Community Services - HC Pool Supplies	15,151	817	0	14,334
09007001	Non Public Transportation-Admin	15,270	11,689	3,507	75
09007001	Non Public Transportation-Secretary	15,581	11,692	3,587	302
09007001	Non Public Transportation-Bus Routes	925,547	453,958	427,014	44,575
	Total Town 009 Fund	1,257,428	635,542	496,786	125,100

Student Activity Trial Balance for Month of March 2022

ACCOUNT	ACCOUNT NAME	BEG. BALANCE	DEBITS	CREDITS	NET CHANGE	END BALANCE
100 -00-0000-10410 -	SA CASH ACCT - PEOPLES BANK	331,304	12,728	13,449	(721)	330,583
100 -00-0000-14004 -	DUE FROM 205 FUND	45	-	-	-	45
100 -00-0000-20251 -	BOOTH HILL SCHOOL	(4,220)	1,644	1,669	(25)	(4,245)
100 -00-0000-20253 -	DANIELS FARM	(502)	-	-	-	(502)
100 -00-0000-20252 -	FRENCHTOWN SCHOOL	(2,611)	-	-	-	(2,611)
100 -00-0000-20550 -	GENERAL FUND	(3,097)	-	87	(87)	(3,183)
100 -00-0000-20152 -	HILLCREST MIDDLE SCHOOL	(14,473)	1,168	291	878	(13,595)
100 -00-0000-20255 -	JANE RYAN SCHOOL	(411)	-	-	-	(411)
100 -00-0000-20156 -	MADISON MIDDLE SCHOOL	(7,821)	1,473	700	773	(7,048)
100 -00-0000-20068 -	MATH HONOR SOCIETY	(1,846)	-	-	-	(1,846)
100 -00-0000-20254 -	MIDDLEBROOK SCHOOL	(4,006)	-	-	-	(4,006)
100 -00-0000-20258 -	TASHUA SCHOOL	(6,609)	1,624	825	799	(5,810)
100 -00-0000-20628 -	THS A.V. CLUB	(172)	-	-	-	(172)
100 -00-0000-20611 -	THS ACADEMIC DECATHLON	(2,468)	-	-	-	(2,468)
100 -00-0000-20709 -	THS ALT METHODS OF PYMNT	38	-	-	-	38
100 -00-0000-20604 -	THS BAND	(967)	-	-	-	(967)
100 -00-0000-20606 -	THS BEST BUDDIES	(937)	-	-	-	(937)
100 -00-0000-20130 -	THS BOOK STORE	(3,245)	-	-	-	(3,245)
100 -00-0000-20711 -	THS BOYS BASKETBALL	(40)	-	-	-	(40)
100 -00-0000-20727 -	THS BOYS INDOOR TRACK	(2,277)	-	-	-	(2,277)
100 -00-0000-20715 -	THS BUS.ED.ENTREPRENEUR	(1,013)	-	-	-	(1,013)
100 -00-0000-20646 -	THS CHEERLEADING	(1,171)	140	-	140	(1,031)
100 -00-0000-20614 -	THS CHORAL GROUP	(5)	-	-	-	(5)
100 -00-0000-20164 -	THS Class of 2017	(5,344)	-	-	-	(5,344)
100 -00-0000-20165 -	THS Class of 2018	(8,098)	-	-	-	(8,098)
100 -00-0000-20166 -	THS Class of 2019	(2,292)	-	-	-	(2,292)
100 -00-0000-20167 -	THS Class of 2020	(13,251)	-	-	-	(13,251)
100 -00-0000-20168 -	THS Class of 2021	(3,503)	85	-	85	(3,418)
100 -00-0000-20169 -	THS Class of 2022	(17,617)	2,080	-	2,080	(15,537)
100 -00-0000-20170 -	THS Class of 2023	(9,424)	-	-	-	(9,424)
100 -00-0000-20171 -	THS Class of 2024	(500)	-	-	-	(500)
100 -00-0000-20172 -	THS Class of 2025	(1,000)	-	-	-	(1,000)
100 -00-0000-20609 -	THS Creative Minds	(2,573)	-	-	-	(2,573)
100 -00-0000-20603 -	THS DECA (MARKETING EDUCATION)	(7,318)	1,361	1,534	(173)	(7,491)
100 -00-0000-20637 -	THS Ethics Club	178	-	-	-	178
100 -00-0000-20647 -	THS FASHION CLUB	(390)	-	-	-	(390)
100 -00-0000-20620 -	THS FRENCH CLUB	(953)	-	-	-	(953)
100 -00-0000-20617 -	THS FUTURE BUSINESS LEADERS	(2,814)	-	-	-	(2,814)
100 -00-0000-20710 -	THS GIRLS BASKETBALL	(6,385)	632	-	632	(5,753)
100 -00-0000-20718 -	THS GIRLS CROSS COUNTRY	(22)	-	-	-	(22)
100 -00-0000-20726 -	THS GIRLS INDOOR TRACK	178	-	-	-	178
100 -00-0000-20732 -	THS GIRLS OUTDOOR TRACK	(1,270)	-	-	-	(1,270)
100 -00-0000-20733 -	THS GIRLS TENNIS	(3,061)	-	-	-	(3,061)
100 -00-0000-20712 -	THS GLOW CLUB	(83)	-	-	-	(83)
100 -00-0000-20719 -	THS GOLF	(567)	-	-	-	(567)
100 -00-0000-20643 -	THS GRADUATION-CAP & GOWNS	(31,598)	75	640	(565)	(32,162)
100 -00-0000-20713 -	THS GRAPHIC DESIGN	(214)	-	-	-	(214)
100 -00-0000-20714 -	THS GYMNASTICS	(1,303)	-	1,706	(1,706)	(3,009)
100 -00-0000-20599 -	THS HISTORY HONOR SOCIETY	(301)	-	-	-	(301)
100 -00-0000-20607 -	THS HOME ECON. CLUB	(2)	-	-	-	(2)
100 -00-0000-20622 -	THS IN/OUT	(2,718)	998	1,100	(102)	(2,820)
100 -00-0000-20640 -	THS INTERACT CLUB	(57)	-	-	-	(57)
100 -00-0000-20615 -	THS ITALIAN CLUB	(825)	-	-	-	(825)
100 -00-0000-20605 -	THS KEY CLUB	(477)	-	-	-	(477)
100 -00-0000-20613 -	THS LATIN CLUB	(144)	-	260	(260)	(404)
100 -00-0000-20101 -	THS LIBRARY CLUB	(3,487)	-	-	-	(3,487)
100 -00-0000-20645 -	THS LINK CREW LEADERS	(22,435)	889	-	889	(21,546)
100 -00-0000-20608 -	THS LOST TEXTBOOKS	(6,208)	-	-	-	(6,208)

100 -00-0000-20621 - THS MISCELLANEOUS	(3,313)	796	90	706	(2,607)
100 -00-0000-20728 - THS MOCK TRIAL	(161)	-	-	-	(161)
100 -00-0000-20032 - THS Model Congress	(2,949)	504	-	504	(2,445)
100 -00-0000-20639 - THS MODEL U.N. CLUB	(1,902)	-	-	-	(1,902)
100 -00-0000-20706 - THS NATIONAL ENGLISH HONOR SOC	(3,858)	-	-	-	(3,858)
100 -00-0000-20707 - THS NATIONAL HONOR SOCIETY	260	-	-	-	260
100 -00-0000-20133 - THS NEWSPAPER	(358)	-	-	-	(358)
100 -00-0000-20082 - THS ORCHESTRA	(742)	-	-	-	(742)
100 -00-0000-20702 - THS PEER LEADERS	(412)	-	-	-	(412)
100 -00-0000-20703 - THS PEER MEDIATION CLUB	(3,499)	-	-	-	(3,499)
100 -00-0000-20110 - THS Pink Ribbon	(1,357)	-	-	-	(1,357)
100 -00-0000-20708 - THS POETRY	(785)	830	100	730	(55)
100 -00-0000-20644 - THS ROBOTICS CLUB	(1,623)	-	-	-	(1,623)
100 -00-0000-20737 - THS Science Honor Society	(310)	248	425	(177)	(487)
100 -00-0000-20648 - THS Shades Club	(250)	-	2,178	(2,178)	(2,428)
100 -00-0000-20630 - THS SKI CLUB	(58)	-	-	-	(58)
100 -00-0000-20631 - THS SOAR Enterprises	(2,800)	-	250	(250)	(3,050)
100 -00-0000-20625 - THS SODA MACHINE	(416)	-	-	-	(416)
100 -00-0000-20624 - THS SPANISH CLUB	(1,063)	-	-	-	(1,063)
100 -00-0000-20510 - THS STUDENT COUNCIL	(5,334)	-	-	-	(5,334)
100 -00-0000-20629 - THS SUNSHINE FUND	(1,312)	-	20	(20)	(1,332)
100 -00-0000-20641 - THS THESPIAN SOCIETY	(15,790)	-	-	-	(15,790)
100 -00-0000-20139 - THS TRILLIUM YEARBOOK	(14,118)	-	1,363	(1,363)	(15,481)
100 -00-0000-20190 - THS VOAG FARM	(27,971)	5,239	-	5,239	(22,731)
100 -00-0000-20180 - THS VOAG FUTURE FARMERS	(1,392)	-	-	-	(1,392)
100 -00-0000-20633 - THS WE THE PEOPLE	(52)	-	-	-	(52)
100 -00-0000-20063 - THS WELLNESS CENTER	(150)	-	-	-	(150)
100 -00-0000-20627 - THS World Lang.HONOR SOCIETIES	(1,972)	420	700	(281)	(2,253)
100 -00-0000-20642 - THS Youth to Youth	(855)	-	-	-	(855)
100 -00-0000-20810 - Trumbull Football Alumni Assoc	(1,000)	-	-	-	(1,000)
100 -00-0000-24004 - Due to Fund 001/Town	(25,139)	-	5,548	(5,548)	(30,687)
100 -00-0000-24008 - Due to Fund 205/BOE Programs	3,062	-	-	-	3,062
100 -00-0000-29280 - ACCOUNTS PAYABLE	-	18,983	18,983	-	-
Student Activity Trial Balance Report Totals	(0)	51,917	51,917	-	(0)

Grants Year-To-Date Budget Report For March 2022

ORG	ACCOUNT DESCRIPTION	ORIGINAL APPROP	TRANFRS/A DJSMTS	REVISED BUDGET	YTD EXPENDED	ENCUMBRANCES	AVAILABLE BUDGET	% USED
2009010	2009010 IDEA-611 20977	-	1,637,108	1,637,108	985,390	531,839	119,879	92.70
2009011	2009011 IDEA-611 NP 20977	-	76,666	76,666	21,253	15,586	39,827	48.10
2009080	2009080 TITLE III-A 20868	-	44,553	44,553	12,741	8,546	23,267	47.80
2009081	2009081 TITLE III-A NP	-	12,757	12,757	800	1,000	10,957	14.10
2009112	2009112 ESSER NonPublic 9.30.2	-	17,018	17,018	-	285	16,733	1.70
2009117	2009117 ESSERII Dyslexia 6.30.	-	11,700	11,700	5,732	5,968	-	100.00
2009118	2009118 ESSER II-\$25K SERA 6.3	-	25,000	25,000	-	-	25,000	-
2009119	2009119 ESSER II-SERA 6.30.23	-	80,000	80,000	-	25,000	55,000	31.30
2009120	2009120 ESSER II 9.30.23	-	765,457	765,457	436,534	224,023	104,900	86.30
2009121	2009121 ESSER ARP 9.30.24	-	1,720,898	1,720,898	298,674	179,195	1,243,029	27.80
2009124	2009124 ARP IDEA 611 6.30.23	-	357,767	357,767	567	-	357,200	0.20
2009125	2009125 ARP IDEA 619 6.30.23	-	33,959	33,959	-	-	33,959	-
2009140	2009140 TITLE I 20679	-	342,804	342,804	16,260	-	326,544	4.70
2009141	2009141 TITLE I NP	-	3,791	3,791	-	-	3,791	-
2009300	2009300 TITLE IV-A 20873	-	11,032	11,032	-	-	11,032	-
2009301	2009301 TITLE IV-A NP 20873	-	4,134	4,134	982	-	3,152	23.80
2009350	2009350 HEADSTART ABCD OCT-SEP	-	388,049	388,049	223,522	100,853	63,673	83.60
2009370	2009370 HEADSTARTFOOD-CACFP	-	3,956	3,956	17,606	-	(13,651)	445.10
2009450	2009450 IDEA PRE-K 20983	-	42,321	42,321	24,617	10,675	7,029	83.40
2009460	2009460 OPEN CHOICE	-	240,139	240,139	19,971	5,072	215,095	10.40
2009470	2009470 PERKINS GRANT 20742	-	56,816	56,816	35,303	9,452	12,061	78.80
2009480	2009480 TITLE II PART A 20858	-	122,522	122,522	23,202	-	99,320	18.90
2009481	2009481 TITLE II-A NP 20858	-	50,602	50,602	1,267	995	48,340	4.50
2009505	2009505 TPAUD-DFC	-	174,994	174,994	89,587	14,968	70,439	59.70
2009507	2009507 TPAUD-Opioid Preventio	-	8,526	8,526	6,172	-	2,354	72.40
2009509	2009509 TPAUD-Local Prevention	-	9,663	9,663	2,972	3,406	3,285	66.00
2009520	2009520 MAGNET TRANSPORTATION	-	72,800	72,800	-	-	72,800	-
2009605	2009605 Emergency Connectivity	-	192,015	192,015	192,015	-	-	100.00
2009700	2009700 CRF Grant -Coronavirus	-	25,861	25,861	25,861	-	-	100.00
2009710	2009710 SPED Stipend-COVID 9.3	-	19,427	19,427	19,427	-	-	100.00
2009720	2009720 STATE BILINGUAL 6.30.2	-	3,271	3,271	1,401	-	1,870	42.80
	Grand Total	-	6,555,605	6,555,605	2,461,855	1,136,865	2,956,885	54.90

Trumbull Board of Education											
Special Revenue BOE Programs											
7/1/21 to 3/31/22											
										Fund Balance(Deficit) as of	
Org#	Description	Org	Obj	Prj	Revenues	Operating Transfer In (Out) also reflected in Revenue (Expense)	Expenditures	Encumbrances	Revenues over (under) Expenditures includes Operating Transfers	7/1/21	3/31/2022
2051660	ACE Foundation	205	31510	Ace	-	-	-	-	-	58	58
2059530	Agriscience	205	31510	Agri	-	-	357	-	(357)	13,389	13,031
2051121	Athletics	205	31510	Athle	375,059	-	190,838	21,631	162,590	67,791	230,381
2052651	Building Use	205	31510	bldgu	38,329	-	13,510	130	24,689	21,636	46,325
2051650	Continuing Ed	205	31510	ContE	48,915	-	54,559	1,870	(7,514)	(342)	(7,856)
2051100	Driver's Education	205	31510	DrEd	14,650	-	8,816	-	5,834	14,386	20,220
2051717	Elementary Strings/Band	205	31510	Pay	48,986	-	124,711	72,334	(148,059)	22,745	(125,314)
2051713	ELITE Business Program	205	31510	ELITE	174,039	150,000	168,779	36,227	(30,967)	-	(30,967)
2056230	Guidance/Testing	205	31510	Guid	983	-	75	-	908	10,092	11,000
2059240	Interdistrict (TECEC*/REACH*/IIP*)	205	31510	Inter	341,362	-	228,115	148,998	(35,750)	63,005	27,255
2059540	Madison Grant	205	31510	Mad	-	-	-	-	-	368	368
2059490	THS Miscellaneous	205	31510	Misc	-	-	-	-	-	2,401	2,401
2051019	PE Day	205	31510	PE	-	-	-	-	-	247	247
2051200	SBCH-PPS Medicaid Program	205	31510	Medic	29,926	-	55,538	27,647	(53,259)	(28,062)	(81,320)
2055904	Rebates	205	31510	Reb	33,028	-	61,320	-	(28,292)	61,584	33,292
2051600	Summer Explorations	205	31510	SS	40,808	-	209,681	7,391	(176,264)	(19,333)	(195,597)
2052221	Take Home Device Insurance	205	31510	Take	45,495	-	28,785	-	16,710	33,472	50,182
2057100	THS AP Testing	205	31510	TEST	397	-	3,046	120,000	(122,649)	19,471	(103,178)
2051380	THS Auditorium	205	31510	Audi	-	-	-	-	-	-	-
2059400	THS Connections	205	31510	Cnnct	-	-	-	-	-	1,125	1,125
2059450	THS Culinary Kitchen Catering	205	31510	Culin	4,343	-	4,902	1,537	(2,096)	7,985	5,890
2055400	THS Musical	205	31510	music	19,359	-	31,551	21,578	(33,770)	17,939	(15,831)
2059510	Typical or Troubled Grant	205	31510	typic	-	-	-	-	-	643	643
2056207	Used Book Sales	205	31510	UsedB	-	-	-	-	-	2,145	2,145
2055213	Voluntary Insurance	205	31510	VISION	-	-	8,502	69,502	(78,004)	2,439	(75,565)
	Total Special Revenue Fund				1,215,679	150,000	1,193,085	528,844	(506,251)	315,185	(191,066)
* TECEC-Trumbull Early Childhood Education Center											
* REACH-Regional Educational Academic and Counseling Help											
* IIP-Interim Instructional (transition) Program											

School Lunch Financials for 2021-2022 School Year - FUND 210																		
	7/31/2021 YTD	7/31/2021 Month	8/31/2021 YTD	8/31/2021 Month	9/30/2021 YTD	9/30/2021 Month	10/31/2021 YTD	10/31/2021 Month	11/30/2021 YTD	11/30/2021 Month	12/31/2021 YTD	12/31/2021 Month	1/31/2022 YTD	1/31/2022 Month	2/28/2022 YTD	2/28/2022 Month	3/31/2022 YTD	3/31/2022 Month
Balance Sheet																		
Assets:																		
Cash	1,515,308		1,522,333		1,592,797		927,651		1,058,298		1,297,548		1,608,662		839,523		1,080,980	
Receivables	48,850		66,020		379,379		745,676		826,231		782,264		731,654		757,388		934,347	
Inventory	39,725		39,725		64,993		64,993		64,993		64,993		64,993		94,319		76,860	
Prepaid Expense													-		-		-	
Due From Others													-		-		-	
Total Assets:	1,603,883		1,628,077		2,037,169		1,738,319		1,949,523		2,144,805		2,405,309		1,691,230		2,092,187	
Liabilities:																		
Accounts Payable	-		-		743,391		224,408		188,275		101,304		150,046		130,924		157,383	
Deferred Revenue	122,156		129,664		126,636		120,704		118,137		115,863		115,402		114,271		110,171	
Due to Town	1,273,920		1,281,958		898,306		1,070,239		1,208,589		1,391,023		1,506,823		644,060		785,306	
Reserve for Encumbrance	52,711		52,711		5,154		-		-		-		-		-		-	
Total Liabilities:	1,448,788		1,464,333		1,773,487		1,415,351		1,515,002		1,608,189		1,772,271		889,255		1,052,861	
Fund Balances:	155,095		163,744		263,682		322,968		434,521		536,616		633,037		801,974		1,039,326	
Statement of Revenues, Expenditures and Changes in Fund Balances																		
Revenue/increases:																		
Food Sales/Charges for Service	(180)	(180)	5,512	5,692	79,519	74,008	144,786	65,267	206,025	61,239	259,613	53,588	311,565	51,952	368,428	56,863	445,492	77,064
Intergovernmental	-	-	10,995	10,995	323,393	312,399	703,203	379,810	1,080,077	376,874	1,412,321	332,244	1,722,805	310,484	2,073,715	350,910	2,550,157	476,442
Other Income/Interest	-	-	-	-	-	-	-	-	-	-	-	-	-	-	-	-	-	-
Intergovernmental (Town) Transfer	-	-	-	-	-	-	-	-	-	-	-	-	-	-	-	-	-	-
Increases	-	-	-	-	-	-	-	-	-	-	-	-	-	-	-	-	-	-
Total revenue/increases	(180)	(180)	16,506	16,686	402,913	386,406	847,989	445,077	1,286,102	438,113	1,671,935	385,833	2,034,371	362,436	2,442,143	407,772	2,995,648	553,506
Expenses/decreases																		
Wages	-	-	8,219	8,219	88,432	80,213	221,320	132,888	320,399	99,079	458,185	137,786	536,156	77,971	634,319	98,163	736,489	102,170
FICA	-	-	595	595	4,991	4,396	12,121	7,130	17,505	5,384	25,585	8,081	29,810	4,224	34,833	5,023	40,165	5,332
Medical	81,472	81,472	81,184	(289)	113,044	31,861	144,514	31,470	177,898	33,384	213,489	35,591	246,894	33,405	280,642	33,748	313,749	33,107
Other Expenses	(421)	(421)	(908)	(487)	20,617	21,525	26,347	5,730	32,528	6,181	35,245	2,717	37,059	1,813	39,739	2,681	45,532	5,793
Supplies	-	-	-	-	11,157	11,157	23,117	11,960	37,398	14,281	48,000	10,602	55,506	7,506	56,687	1,181	62,667	5,980
Cost of Food	-	-	-	-	139,515	139,515	340,757	201,242	507,319	166,562	596,279	88,960	727,018	130,739	825,057	98,039	988,829	163,772
Equipment/Capital	-	-	-	-	-	-	524	524	2,214	1,690	2,214	-	7,417	5,203	7,417	-	7,417	-
Intergovernmental Transfer	-	-	-	-	-	-	-	-	-	-	-	-	-	-	-	-	-	-
Decreases	-	-	-	-	-	-	-	-	-	-	-	-	-	-	-	-	-	-
Total Expenditures/Increases	81,051	81,051	89,089	8,038	377,756	288,667	768,700	390,944	1,095,260	326,561	1,378,998	283,737	1,639,858	260,861	1,878,694	238,835	2,194,848	316,154
Incr/(Decr) in fund balances before operating transfers	(81,231)		(72,583)		25,157		79,290		190,842		292,937		394,512		563,449		800,801	
Operating Transfers in/(out)	-		-		-		-		-		-		-		-		-	
Incr/(Decr) in fund balances after operating transfers	(81,231)		(72,583)		25,157		79,290		190,842		292,937		394,512		563,449		800,801	
Fund Balances:																		
Beginning of year	236,327		236,327		238,525		243,679		243,679		243,679		238,526		238,525		238,525	
End of period	155,095		163,744		263,682		322,968		434,521		536,616		633,037		801,974		1,039,326	
Months Revenue Control	(180)		16,686		386,406		445,077		438,113		385,833		362,436		407,772		553,506	
Month Expenditure Control	81,051		8,038		288,667		390,944		326,561		283,737		260,934		238,835		316,154	
Profit (Loss) for the month	(81,231)		8,649		99,938		59,286		111,552		102,095		101,502		168,937		237,352	

School Lunch Financials As of March 31, 2022 - FUND 210

Balance Sheet as of 3/31	Budget	3/31/22 Actual	Encumbered	Available/ (Over)	3/31/21 Actual	YTY Diff.	% Change
Assets:							
Cash		1,080,980			581,462	499,518	85.91%
Receivables		934,347			608,224	326,123	53.62%
Inventory		76,860			67,194	9,666	14.38%
Prepaid Expense							
Due From Others							
Total Assets:		2,092,187			1,256,880	835,307	66.46%

Liabilities:							
Accounts Payable		157,383			147,455	9,928	6.73%
Deferred Revenue		110,171			131,971	(21,799)	-16.52%
Due to Town		785,306			2,028,717	(1,243,411)	-61.29%
Reserve for Encumbrance						-	
Total Liabilities:		1,052,861			2,308,143	(1,255,282)	-54.38%

Fund Balances:		1,039,326			(1,051,264)	2,090,589	-198.86%
-----------------------	--	-----------	--	--	-------------	-----------	----------

Statement of Revenues, Expenditures and Changes in Fund Balances for the 7 months ended 3/31

Revenue/increases:

Food Sales/Charges for Service	2,006,000	445,492	-	1,560,508	51,299	394,192	768.42%
Intergovernmental	1,853,800	2,550,157	-	(696,357)	1,053,362	1,496,795	142.10%
Other Income/Interest				-	-	-	
Intergovernmental (Town) Transfer				-	-	-	
Increases				-	-	-	
Total revenue/increases	3,859,800	2,995,648	-	864,152	1,104,661	1,890,987	171.18%

Expenses/decreases

Wages	975,000	736,489	275,903	(37,392)	617,949	118,540	19.18%
FICA	53,000	40,165	-	12,835	35,499	4,666	13.14%
Medical	479,301	313,749	127,229	38,324	306,646	7,103	2.32%
Other Expenses	42,125	45,532	-	(3,407)	22,896	22,636	98.86%
Supplies	55,000	62,667	37,076	(44,743)	28,506	34,161	119.84%
Cost of Food	971,000	988,829	513,580	(531,410)	525,576	463,254	88.14%
Equipment/Capital	16,500	7,417	-	9,083	18,806	(11,390)	-60.56%
Intergovernmental (Town) Transfer							
Decreases							

Total Expenditures/Increases	2,591,926	2,194,848	953,788	(556,709)	1,555,878	638,969	41.07%
-------------------------------------	-----------	-----------	---------	-----------	-----------	---------	--------

Incr/(Decr) in fund balances before operating transfers		800,801			(451,217)	1,252,018	-277.48%
Operating Transfers in/(out)		-			-	-	

Incr/(Decr) in fund balances after operating transfers		800,801			(451,217)	1,252,018	-277.48%
---	--	----------------	--	--	------------------	-----------	----------

Fund Balances:

Beginning of year		238,525			(600,047)	838,572	-139.75%
End of period		1,039,326			(1,051,264)	2,090,589	-198.86%

Months Revenue Control		553,506			362,118		
Months Exp Control		316,154			283,235		

Profit (Loss) for the month		237,352			78,883	158,469	200.89%
------------------------------------	--	----------------	--	--	---------------	---------	---------

	Trumbull Board of Education					
	Scholarship Details					
	7/1/21 to 3/31/22			Fund Balance as of 3/31/22		
Account Name	Revenues	Expenditures	Net Rev(Exp)	Permanent	Unrestricted	Total
Brewster	6	-	6	1,685	194	1,879
Peter Burke	27	-	27	-	7,941	7,941
K. Capobianco	6	-	6	-	1,839	1,839
Donna Cassidy	38	-	38	-	11,449	11,449
Citizenship/Holdsworth	0	-	0	-	40	40
Chelsea Cunha	39,571	-	39,571	-	39,571	39,571
Mary Curtiss	23	-	23	-	6,974	6,974
S. Dick Electronics	37	-	37	10,000	1,128	11,128
Education	-	-	-	-	-	-
Ran Grinnell	4	-	4	-	1,093	1,093
Clare Hampford	13	-	13	-	3,889	3,889
G. Hartz	-	-	-	-	10	10
Klein/ Danaher	11	-	11	-	3,240	3,240
Lorimer	0	-	0	-	78	78
Dr. Gloria Maina	2	-	2	-	556	556
Frances S. Mallett	4	-	4	-	1,165	1,165
Loretta McDougall	44	-	44	-	13,212	13,212
Karen Mraz	282	-	282	-	9,623	9,623
National Merit	2	-	2	-	537	537
PHNA	30	-	30	8,000	1,031	9,031
Ralph Pascale	2	-	2	-	512	512
Jill Resnick	55	-	55	-	16,404	16,404
R. Rossomando	21	-	21	5,190	966	6,156
Dick Seaman	107	4,640	(4,533)	-	-	-
R. Simses	9	-	9	2,500	312	2,812
R. Stowe	8	-	8	2,200	275	2,475
Trumbull High	4	-	4	-	1,113	1,113
Jennie N. Villano	1	-	1	-	212	212
Zink	37	-	37	10,000	1,131	11,131
Total Scholarship Fund	40,346	4,640	35,706	39,575	124,493	164,068