



Tecton
ARCHITECTS

IMAGINING POSSIBILITIES

FOR TRUMBULL'S SCHOOL FACILITIES

TRUMBULL, CT

Community Conversation #1

Booth Hill School
November 17, 2022

Start: 6:00PM

End: 8:00PM



1. Team Introduction
2. Critical Aspects of the Project
3. Schedule
4. Bold Goals (*BHAG!*)
5. What We Know So Far
6. What's Next
7. How to Stay Connected

UTILIZATION & PROGRAMMING



**EDWARD
WIDOFSKY**

AIA, LEED AP BD+C

*Project Manager
Tecton*

OVERSIGHT & DAY-TO-DAY CONTACT



**JEFF
WYSZYNSKI**

AIA

*Principal-in-Charge
Tecton*

COMMUNITY ENGAGEMENT

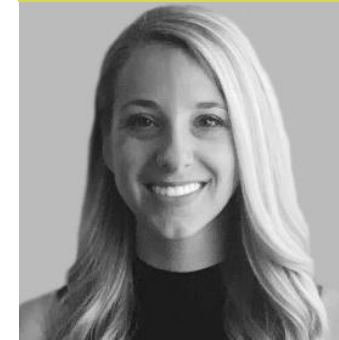


**ANTONIA
CIAVERELLA**

EDAC, LEED AP BD+C,
WELL AP, FITWEL

*Architectural Designer
Tecton*

BUILDING CONDITION ASSESSMENT



ALISON FROST

*Project Architect
Tecton*

CONSULTANT EXPERTISE



**DEREK
BRIDE**

LEED AP BD+C

*MEP Engineering
Principal, CES*

CONSULTING ENGINEERING SERVICES

MEP Engineering

MCKIBBEN DEMOGRAPHIC RESEARCH

Enrollment Projections & Demographics Study

The What.

Analyze the existing facilities

Conduct a demographic study for enrollment projections

Identify a planning strategy for future educational delivery and building use to serve the Town for the next 10-15 years

The Who.

A diverse group of administrators, students & faculty

Committee members, businesses, Town staff, residents

The entire community!



Design Phase Detail Schedule

2022

A S O N D

2023

J F M A M J J A S O N D

Existing Conditions
Analysis

Building Walkthroughs

Analysis

Final Report

Programming & Needs
Assessment

Demographics Review

Options Development

Refine the Options

Select Preferred Option

Referendum Campaign & Grant
Application (TBD)

FINAL
ACCEPTANCE

Mark your calendar for these upcoming events!

Community
Conversation #1

Community
Conversation #2

Community
Conversation #3

Community
Conversation #4

Thur.
11/17
6-8pm

Thur.
2/2
6-8pm

Wed.
3/22
6-8pm

Wed.
4/26
6-8pm

Topics:
Conditions, Utilization
and Thinking Big!

Topics:
Opportunities and
Options

Topics:
Refined and
Preferred Option

Topics:
Finalizing the Plan
and Next Steps

Booth Hill
School

Frenchtown
School

Madison
Middle School

Trumbull
High School

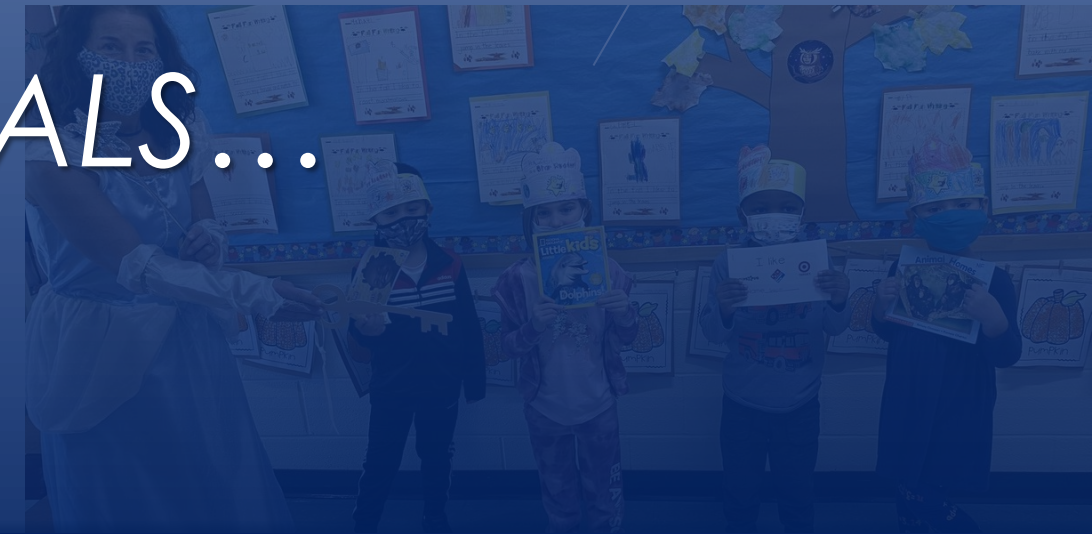
Community
Conversation
#1 (11/17)

Community
Conversation
#2 (2/2)

Community
Conversation
#2 (3/22)

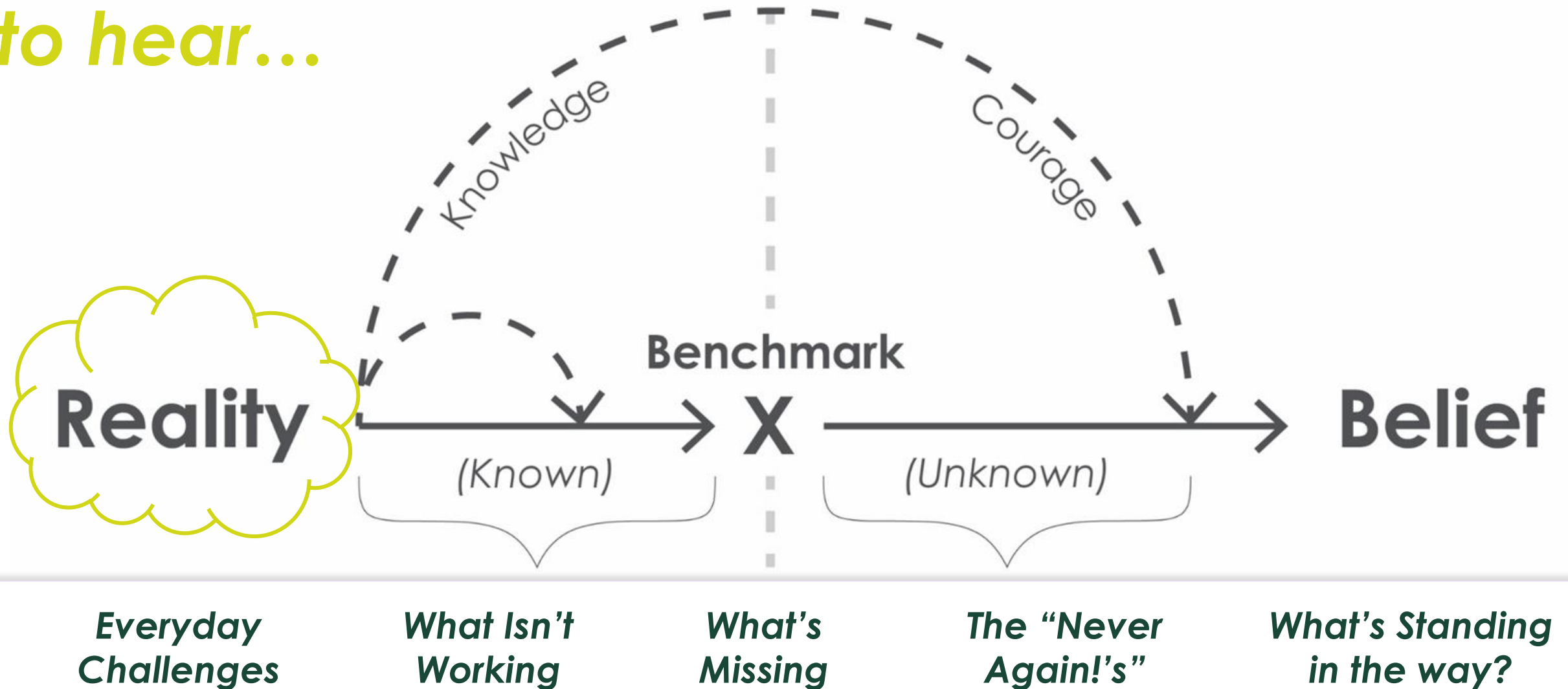
Community
Conversation
#2 (4/26)

- Working Group Meetings
- Town Board Meetings
- OSCGR Meetings



“...Empowers each student to become a life-long learner and to live and participate in a democratic, diverse and global society.”

**But we also want
to hear...**





Tecton
ARCHITECTS

WHAT WE KNOW SO FAR...

COMPREHENSIVE APPROACH



Building Walkthroughs & Initial Programming Discussions



Tecton
ARCHITECTS

1. Booth Hill Elementary School ~ 9/13/2022
2. Daniels Farm Elementary School ~ 9/13/2022
3. TECEC (Trumbull Early Childhood Education Center) ~ 9/13/2022
4. Middlebrook Elementary School ~ 9/14/2022
5. Jane Ryan Elementary School ~ 9/14/2022
6. Hillcrest Middle School ~ 9/16/2022
7. Madison Middle School ~ 9/16/2022
8. REACH ~ 9/22/2022
9. Agriscience High School ~ 9/22/2022
10. Long Hill Administration Building ~ 9/22/2022
11. Trumbull High School ~ 9/23/2022
12. Tashua Elementary School ~ 9/30/2022
13. Frenchtown Elementary School ~ 9/30/2022

Walkthroughs completed for all 13 buildings, approximately 1,152,245 sf



Site & Building Envelope

Existing Conditions Review



Interiors & Building Systems



Educational Discussions
(Programmatic Needs & Operations)

Conditions Analysis



Building Summary Table

Building Name		GSF	% of total town bldgs	Orig. Const.	Age
PK	Trumbull Early Childhood	24,044	2.1%	2005	17
K-5	Booth Hill Elementary	54,161	4.7%	1955	67
	Daniels Farm Elementary	65,091	5.6%	1962	60
	Frenchtown Elementary	94,305	8.2%	2003	19
	Jane Ryan Elementary	56,895	4.9%	1955	67
	Middlebrook Elementary	75,811	6.6%	1953	69
	Tashua Elementary	55,193	4.8%	1965	57
6-8	Hillcrest Middle	141,000	12.2%	1967	55
	Madison Middle School	154,970	13.4%	1960	62
9-12	Regional Agriscience Center	35,000	3.0%	2001	21
	Trumbull High School	367,000	31.9%	1971	51
6-8/9-12	REACH	8,700	0.8%	1970	52
Admin	Long Hill Administration	20,075	1.7%	1920	102
	Subtotal	1,152,245	Average Age		54



Areas of Study

1. **Site** (Pavement, traffic circulation, signs, parking, curbs, sidewalks)
2. **Architectural Exterior** (Building envelope, roofs, windows, doors, masonry, trim, downspouts)
3. **Architectural Interior** (flooring, ceiling, lighting, wall finishes, doors, frames)
4. **Code ~ Accessibility / Life Safety** (accessible entrances, lifts/ramps, floor clearance, sprinklers, fire alarm)
5. **Building Systems** (plumbing, heating, ventilation & air conditioning by S/P, lighting, electrical systems, technology, fire protection, fire alarms)

Site



Building
Envelope



Accessibility



Building
Systems

(Plumbing, FP, Elec.
Lighting, Alarms)



1. Most buildings have been well maintained, yet **no building has received comprehensive, like new, renovations.**
2. Reuse, modification, and past adaptations affect **educational use and operational efficiency.**
3. In most cases, **poor definition of the school/site boundaries** lead to some concern(s) related to traffic flow, safety and security.
4. For buildings constructed prior to 2000s, majority of building systems and finishes are **at or past their useful life.**
5. **Poor comfort/temperature control. IAQ** (Indoor Air Quality) does not meet current code ~ commonly voiced concern throughout (S/P conducting report).
6. **Accessibility concerns throughout** building/site, few and uneven attempts at compliance.

Conditions Analysis ~ Common Findings



Site ~ Site traffic, parking and perimeter security concerns for site (pedestrian and vehicular safety), play areas exposed at times, limited universal accessibility (parking, sidewalks, and play), poor or no definition of school boundary, some surfaces past their useful life (parking, sidewalks, and play).

Architectural Exterior ~ Most buildings contain poor insulating values, (limited wall insulation ~ single wythe), some poorly functioning and/or single pane windows, some roofs past their useful life, some instances persistent water infiltration/leaks at windows, doors, roofs accelerated deterioration.

Architectural Interior ~ For buildings constructed prior to 2000, majority of finishes past useful life (millwork, floors, doors, ceilings), lockers, toilets all poor.

Code/Accessibility/Life Safety ~ Several compliance issues at toilet rooms, floor clearances/reach at entranceways, sinks, and millwork, stage(s), etc.

Building Systems ~ For buildings constructed prior to 2000 ~ majority of plumbing systems and fixtures are fair condition but past their useful life, electrical lighting and power distribution end/past useful life.



Conditions Analysis ~ Specific Examples



Booth Hill Elementary School ~ Former closets now intervention rooms, poor site circulation (bus/parent), poor climate control, poor visibility from admin.



Daniels Farm Elementary School ~ Sister school to Booth Hill, similar challenges, roof and envelope water infiltration has led to accelerated deterioration of envelope.



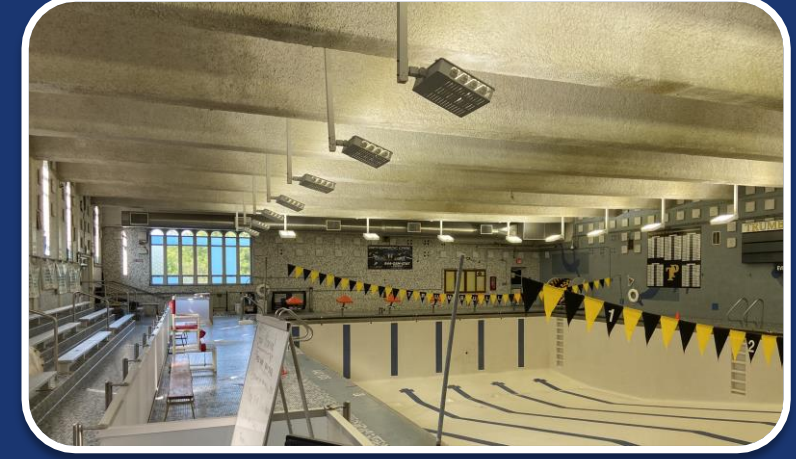
TECEC ~ Currently share space with Middlebrook E.S. ~ operational and logistical challenges, play areas in need of updating, climate control concerns, requested more program space.



Middlebrook Elementary School ~ site circulation concerns (pedestrian, bus, parent), poor lighting levels & climate control, desire for dedicated core space (gym, café, presentation), specialized ed.



Jane Ryan Elementary School ~ Main entry to school not accessible, capacity concerns ~ loss of music/maker space for gen classroom, accessibility compliance issues throughout.



Hillcrest Middle School ~ Lack of required functioning/proper program space throughout (S.E., labs, admin., etc.), pool space not used, travel distance challenging, poor climate control, poor site boundary.

Conditions Analysis ~ Specific Examples



Tecton
ARCHITECTS



Madison Middle School ~ Poor climate control due to building envelope, good layout but program space needs updating, media center poor location, more dedicated S.E. space.



REACH ~ Overall poor condition of building, building envelope leaks (water/air), limited accessibility compliance, min. access to natural daylight, need more dedicated program space.



Agriscience ~ Greenhouse requires update/replacement, persistent roof leaks and moisture infiltration causing accelerated deterioration, renovate obsolete program space.



Long Hill Administration ~ Generally in poor condition, building reinvented several times, multiple different vintages of construction & building systems, satisfies program need but limited accessibility throughout, poor public entry



Tashua Elementary School ~ Obsolete modulares should be removed (safety hazard), building well maintained but overall systems/finishes past useful life, toilets rooms poor and too few, access to more nat. daylight.



Frenchtown Elementary School ~ Ingress/Egress to site poor & congested at times, site play/paved areas have accelerated deterioration, some building envelope concerns with moisture infiltration, S.E. program space need.

Conditions Analysis ~ Specific Examples



Tecton
ARCHITECTS



Trumbull High School ~ Revisit and identify portions of work that were not completed during last renovation (doors, terrazzo repairs, portables, etc.), investigate optimizing media center area of school, coordinate efforts with planned wellness center/weight room expansion, optimize underutilized areas near and adjacent to cafeteria, reinvent dedicated rooms for obsolete programs).

Topics and Review included

1. **Interviews of principals, facilities, and district leadership, often with input collected from teachers.**
2. **Questions Included...**
 - a. What spaces get the most use? The least?
 - b. What is missing?
 - c. What affects quality of education on a daily basis?
 - d. What works well, what doesn't?
 - e. How can this facility better support the staff and/or students?
 - f. What limits/reduces educational time? Are there adjacency relationships that should be improved (locations of key programmatic functions)?
 - g. Biggest day to day challenge?
 - h. How can this facility better support the students?
 - i. What is fundamental to the student experience that is currently working or not working with the existing facility?



Programmatic Discussions~ Common Findings



1. Educators clearly **making the best use of their facilities**, reimagining, re-purposing and utilizing all practical areas.
2. The **evolution of small group instruction and specialized education** require additional dedicated and appropriately appointed space.
3. Older **buildings present limited flexibility to create adaptative flexible space for 21st Century learning** (small group, project-based learning, professional development/prep space, learning lab).
4. Consistent **concerns about capacity of the buildings** ~ Ex. bubble years with enrollment forcing “art on a cart” or sacrifice of specialty programs.





Comments from the BOE Workshop on 9/20/2022



Harvard Schools for Health <https://schools.forhealth.org/>

Whole Child Wellness~

WELL is for people...

**BUILDING
COMPONENTS**

AND THEIR
EFFECTS
ON

**HUMAN
HEALTH**

Applying the Research



Envelope technology
accounts for

30%

Of energy used

In daylit classrooms,
students progress

20%
26%

Faster on
math tests

Faster on
reading tests

27%

of middle school
students don't feel
they belong

Connections
between dampness,
leaky envelopes &
respiratory health

With proper
ventilation rates,
students complete
schoolwork tasks

8% faster

Sense of belonging
improves grades,
engagement &
advanced course
selection

Higher levels of
outdoor air contributes
to higher test scores in
math and reading

Nature increases
happiness & pro-
social behavior

40 sec.

In nature, or views
to nature, leads to
fewer mistakes on
focused tasks

The physical learning
environment impacts
student learning progress by

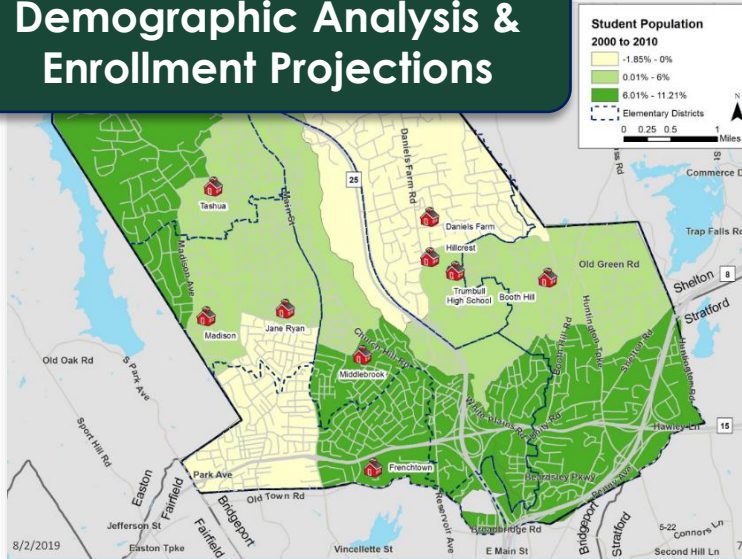
25%



Tecton
ARCHITECTS

WHAT'S NEXT...

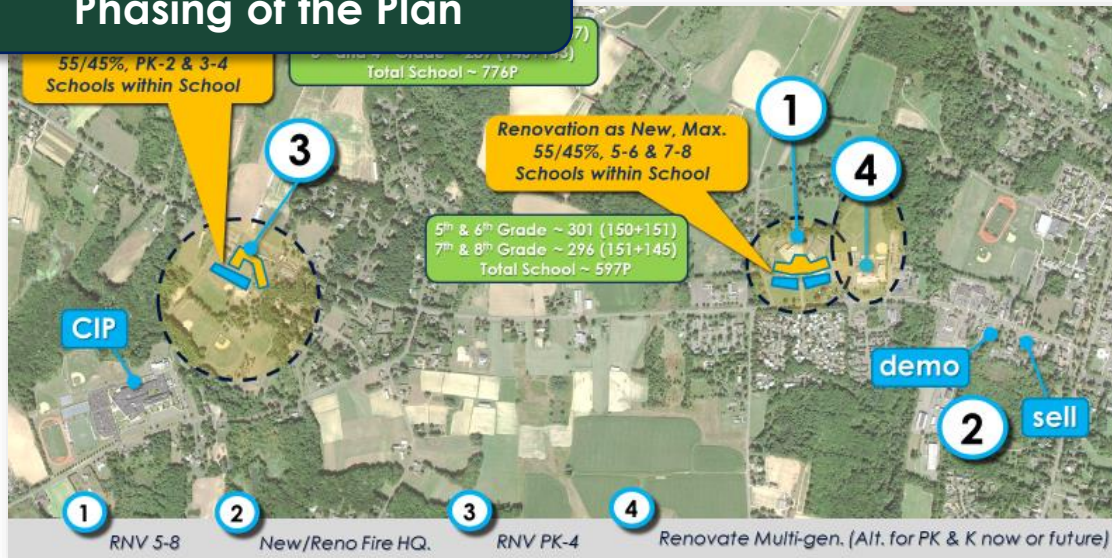
Demographic Analysis & Enrollment Projections



Benchmarking of Facilities & Comparative Analysis



Identification of Priorities & Phasing of the Plan



Planning Options & ROM Costs





Tecton
ARCHITECTS

HOW TO STAY CONNECTED

WHY COMMUNITY ENGAGEMENT MATTERS



Tecton
ARCHITECTS

This is a plan for your community!

Stronger together ~ Work together to identify & solve needs across entire community.....

Critical to represent needs across the district.

Meet them where they are at!

Surveys & Mailers

Student Handouts and Activities

Fliers and Public Workshops

Faculty Questionnaire

Open House(s) & Tours



Community
Conversation #2



Topics:
Opportunities and
Options

 Frenchtown
School

Community
Conversation #3



Topics:
Refined and
Preferred Option

 Madison
Middle School

Community
Conversation #4



Topics:
Finalizing the Plan
and Next Steps

 Trumbull
High School



Tecton
ARCHITECTS

QUESTIONS?



Tecton
ARCHITECTS

IMAGINING POSSIBILITIES

FOR TRUMBULL'S SCHOOL FACILITIES

TRUMBULL, CT

Community Conversation #1

Booth Hill School
November 17, 2022